

Cap/taLand

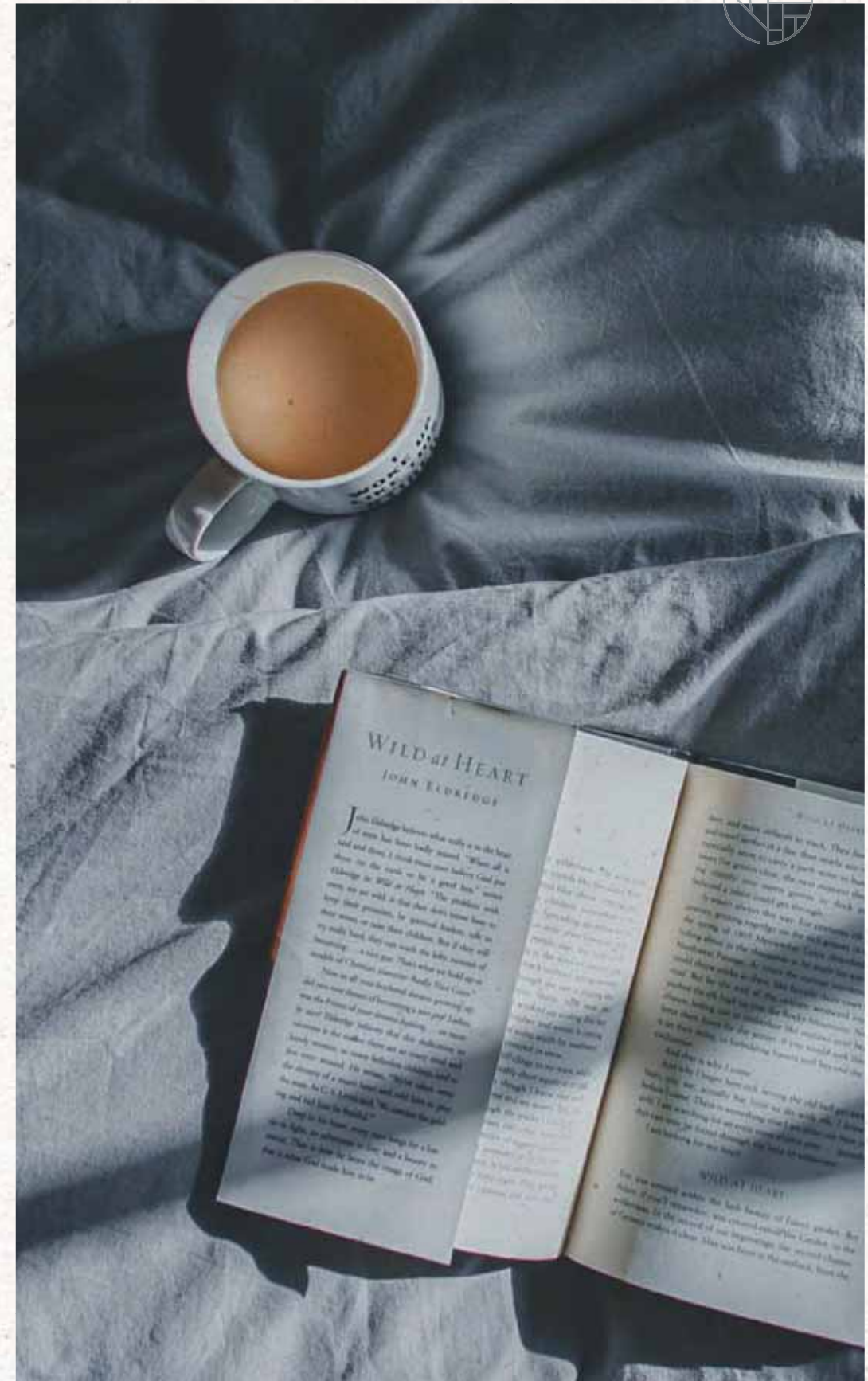


One
Pearl
Bank

Tropical Hygge

(pronounced 'hoo-ga')

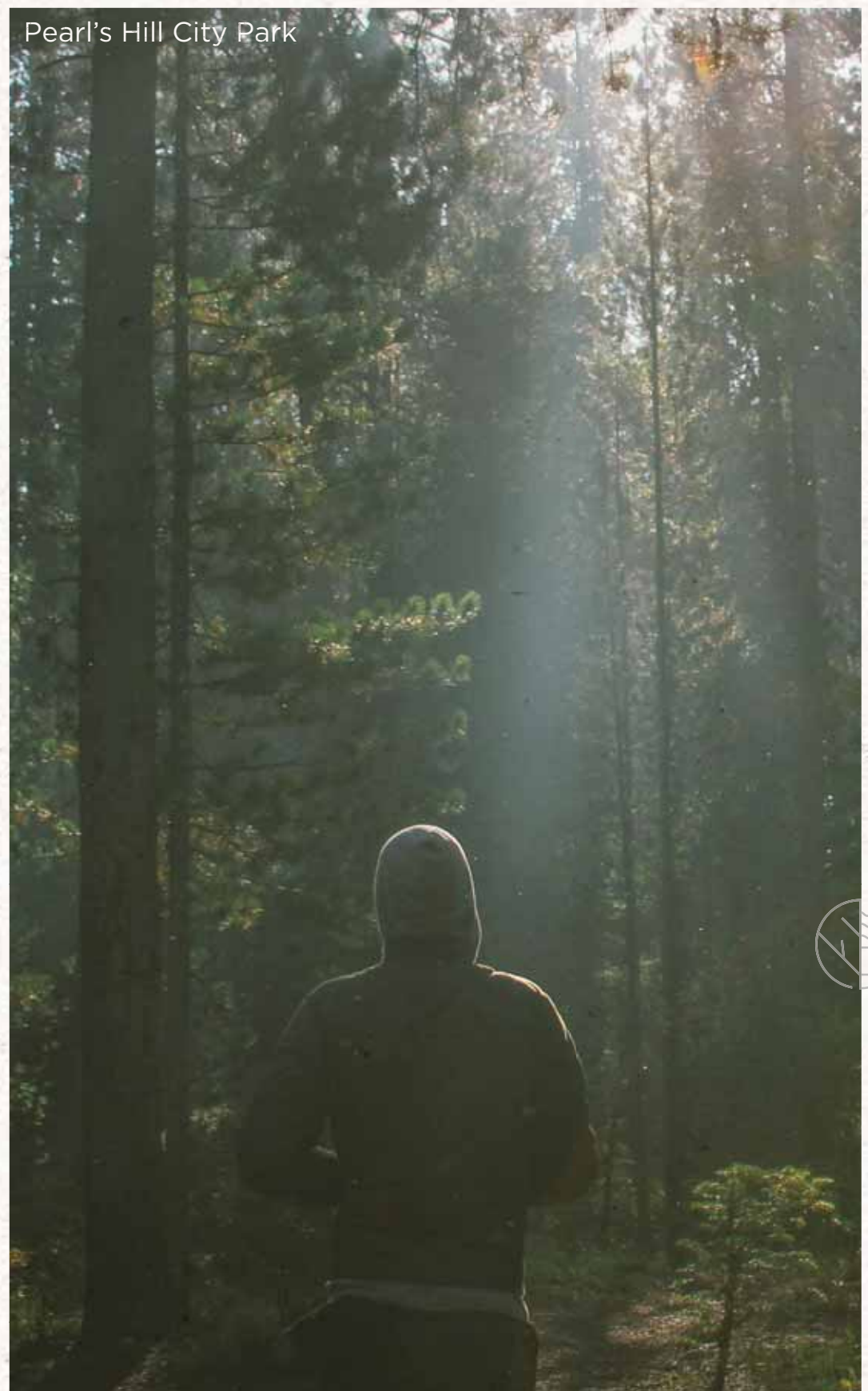
Welcoming spaces where one's cares
simply melt away. A home where Hygge
unlocks the comfort and calm of the living
spaces within to help you live well.



There are places we seek.



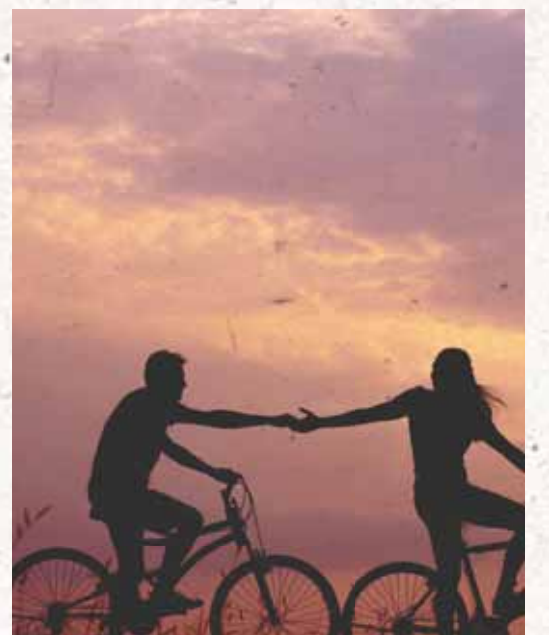
That make us feel whole again.



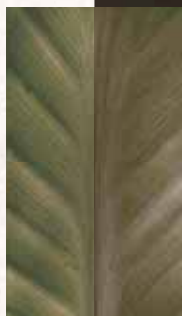
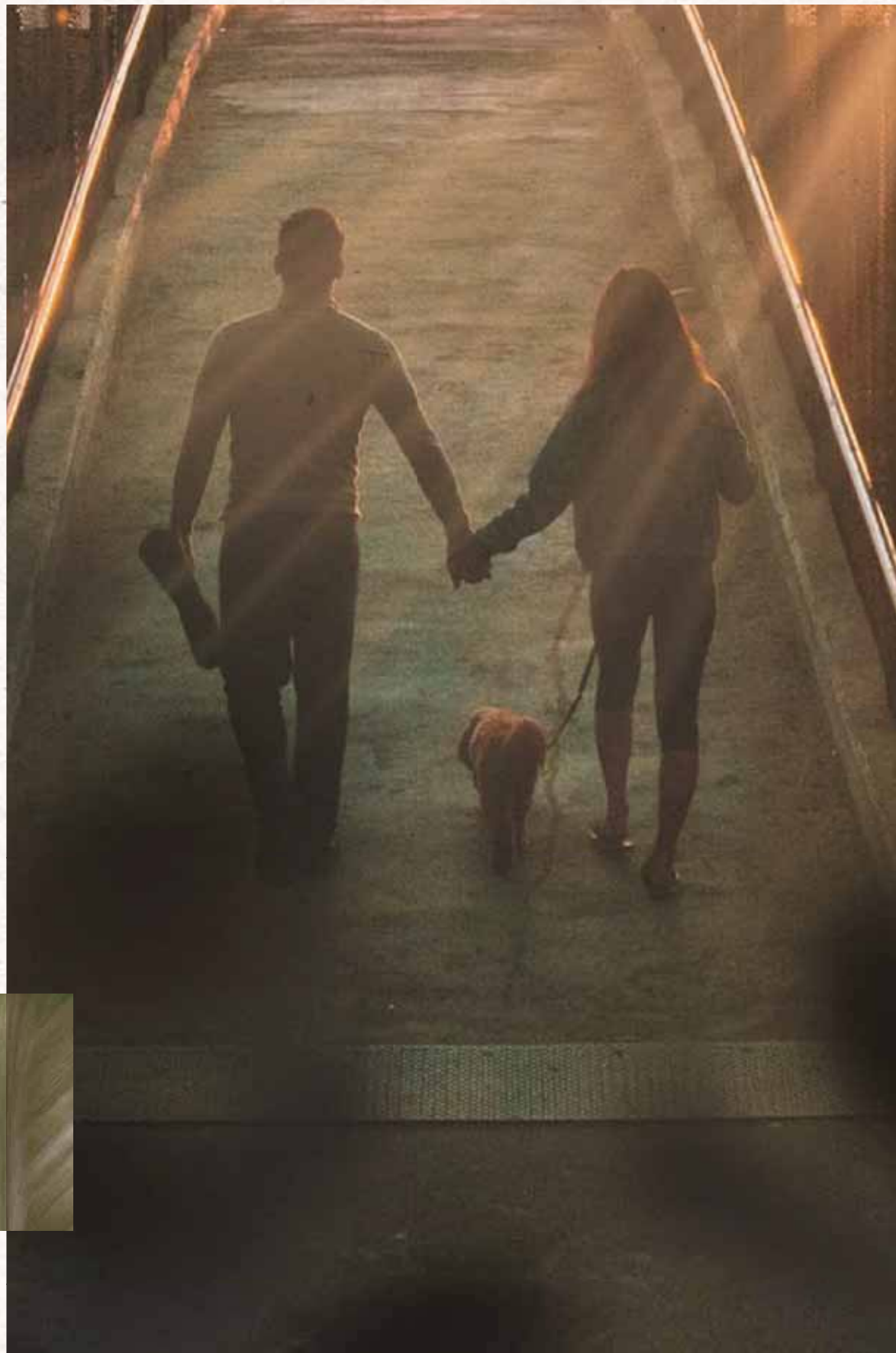
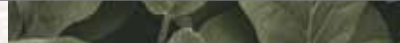
Places of respite, regeneration and renewal.



This is the place that provides.



This is where Hygge
Comes home in the tropics.



Where the grounds are designed to
Soothe the senses.





Where the lapping *Water refreshes.*





Where the paths lead to reflective nooks that are havens

For meditation and reflection.

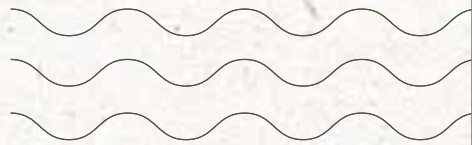


Open yourself to new views and *New Experiences.*



Put down roots where we *Plant a community.*

Relish the pleasure of seeing your garden grow.



Chillax Terrace



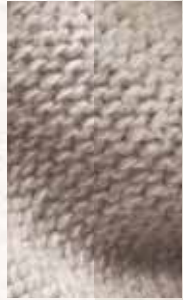
Occulus Sky



And when you turn your gaze to the views,
You are happy to have chosen this place.



For even inside, you can move in with zero stress,
because zero renovation *Makes room for everything.*



Where spaces and surfaces *Comfort* you.

This is where
Hygge finds its home
in the tropics



What's at your doorstep?
Your comfort zone.



Comfort Food
5 minutes walk

Tiong Bahru
Keong Saik Road
Bukit Pasoh
Chinatown

Comfortable Connections

Outram MRT
5 minutes walk/drive

Triple-line Outram MRT Interchange
CTE/AYE/PIE
KPE/ECP

25 minutes ride away
CBD/Marina (20 minutes)
Orchard Road (10 minutes)
Changi Airport/Jewel (25 minutes)

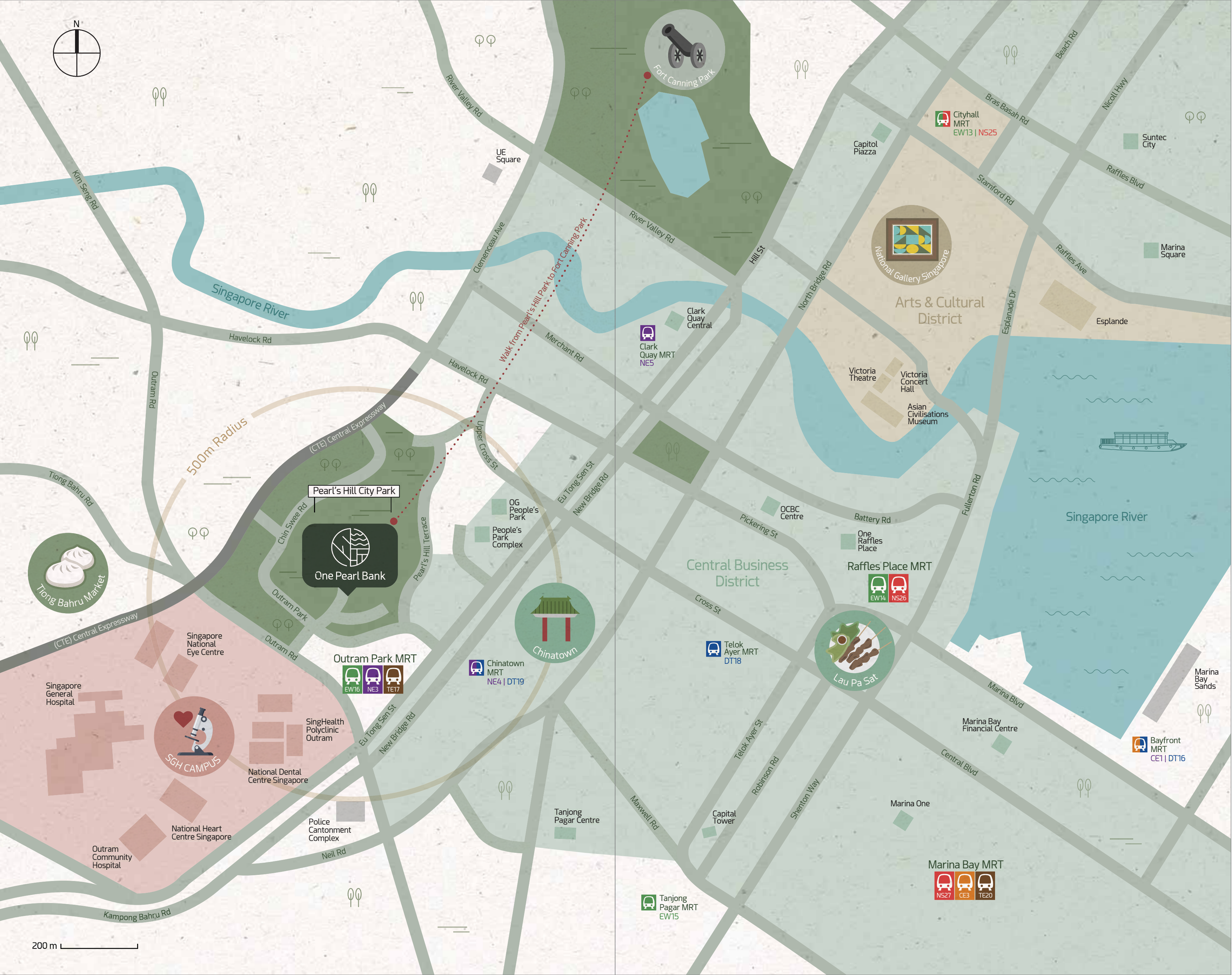
Comfort Breaks
10 minutes ride away

Gardens by the Bay
Sentosa
MBS
Pearl's Hill City
Fort Canning Park

Cultural Connections
10 minutes ride away

National Museum
National Gallery
Asian Civilisations Museum
Esplanade





HOME GROUNDS

Legend:

- A Pedestrian Access Gate
- B Eco-pond
- C Access to Basement 2
- D Outdoor Pavilions
- E Swimming Pool
- F Aqua Gym
- G Hydromassage Pool
- H In-Pool Lounge Chairs
- I BBQ Area
- J Kids' Pool
- K Kid's Play Lawn
- L Function Room
- M Labyrinth Trail
- N Exercise Corner
- O Access to Park
- P Playground
- Q Pets Park
- R Drop-off
- S Allotment Garden (at every 4th floor)
- T Service Area (Ground Floor) – Genset
- T1 Service Area (Basement 1) – Bin Cent – Electrical Substation



Chillax Terrace L18

- F Outdoor Lounge
- G Alfresco Dining
- H Open Amphitheatre
- I Entertainment Area
- J Changing Room

Prive Terrace L14

- A Water Feature
- B Outdoor Lounge
- C Yoga Deck
- D Exercise Lawn
- E Meditation Corner



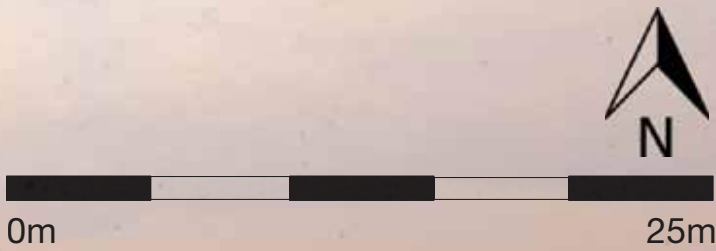
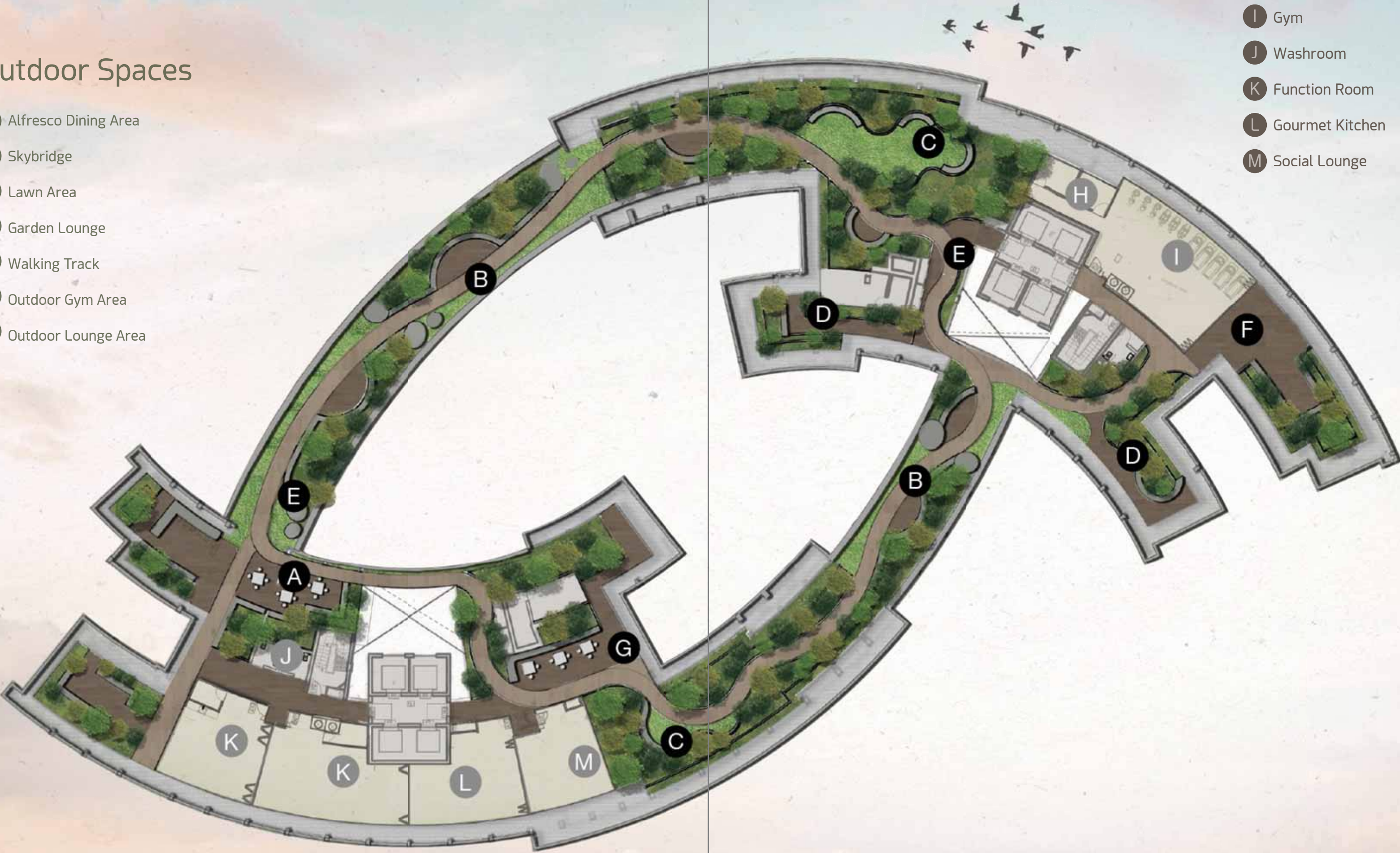
OCULUS SKY (L39)

Outdoor Spaces

- A Alfresco Dining Area
- B Skybridge
- C Lawn Area
- D Garden Lounge
- E Walking Track
- F Outdoor Gym Area
- G Outdoor Lounge Area

Indoor Spaces

- H Changing Room
- I Gym
- J Washroom
- K Function Room
- L Gourmet Kitchen
- M Social Lounge



UNIT DISTRIBUTION

Legend

Type A – STUDIO
Type B – 1 BEDROOM
Type C – 2 BEDROOM
Type D – 3 BEDROOM
Type E – 4 BEDROOM
Type F – PENTHOUSE

Storey/ Unit No.	1	2	3	4	5	6	7	8	9	10	11
39	OCULUS SKY										
38	F4				F3						
37	D1-c	A1-b (m)	A1-b	C1-c	C1-c (m)	C2-c	D2-c	D3-c	B1-b	B2-b	C3-c
36	D1-b	A1-b (m)	A1-b	C1-b	C1-b (m)	C2-b	D2-b	D3-b	B1-b	B2-b	C3-b
35	D1-a	A1-a (m)	A1-a	C1-a	C1-a (m)	C2-a	D2-a	D3-a	B1-a	B2-a	C3-a
34	D1-b	A1-b (m)	A1-b	C1-b	C1-b (m)	C2-b	D2-b	D3-b	B1-b	B2-b	C3-b
33	D1-c	A1-b (m)	A1-b	C1-c	C1-c (m)	C2-c	D2-c	D3-c	B1-b	B2-b	C3-c
32	D1-b	A1-b (m)	A1-b	C1-b	C1-b (m)	C2-b	D2-b	D3-b	B1-b	B2-b	C3-b
31	D1-a	A1-a (m)	A1-a	C1-a	C1-a (m)	C2-a	D2-a	D3-a	B1-a	B2-a	C3-a
30	D1-b	A1-b (m)	A1-b	C1-b	C1-b (m)	C2-b	D2-b	D3-b	B1-b	B2-b	C3-b
29	D1-c	A1-b (m)	A1-b	C1-c	C1-c (m)	C2-c	D2-c	D3-c	B1-b	B2-b	C3-c
28	D1-b	A1-b (m)	A1-b	C1-b	C1-b (m)	C2-b	D2-b	D3-b	B1-b	B2-b	C3-b
27	D1-a	A1-a (m)	A1-a	C1-a	C1-a (m)	C2-a	D2-a	D3-a	B1-a	B2-a	C3-a
26	D1-b	A1-b (m)	A1-b	C1-b	C1-b (m)	C2-b	D2-b	D3-b	B1-b	B2-b	C3-b
25	D1-c	A1-b (m)	A1-b	C1-c	C1-c (m)	C2-c	D2-c	D3-c	B1-b	B2-b	C3-c
24	D1-b	A1-b (m)	A1-b	C1-b	C1-b (m)	C2-b	D2-b	D3-b	B1-b	B2-b	C3-b
23	D1-a	A1-a (m)	A1-a	C1-a	C1-a (m)	C2-a	D2-a	D3-a	B1-a	B2-a	C3-a
22	D1-b	A1-b (m)	A1-b	C1-b	C1-b (m)	C2-b	D2-b	D3-b	B1-b	B2-b	C3-b
21	D1-a	A1-b (m)	A1-b	C1-c	C1-c (m)	C2-c	D2-c	D3-c	B1-b	B2-b	C3-c
20	D1-b	A1-b (m)	A1-b	C1-b	C1-b (m)	C2-b	D2-b	D3-b	B1-b	B2-b	C3-b
19	D1-a	A1-a (m)	A1-a	C1-a	C1-a (m)	C2-a	D2-a	D3-a	B1-a	B2-a	C3-a
18	CHILLAX TERRACE										
17	D1-b	A1-b (m)	A1-b	C1-b	C1-b (m)	C2-b	D2-b	D3-b	B1-b	B2-b	C3-b
16	D1-c	A1-b (m)	A1-b	C1-c	C1-c (m)	C2-c	D2-c	D3-c	B1-b	B2-b	C3-c
15	D1-b	A1-b (m)	A1-b	C1-b	C1-b (m)	C2-b	D2-b	D3-b	B1-b	B2-b	C3-b
14	D1-a	A1-a (m)	A1-a	C1-a	C1-a (m)	C2-a	D2-a	D3-a	B1-a	B2-a	C3-a
13	D1-b	A1-b (m)	A1-b	C1-b	C1-b (m)	C2-b	D2-b	D3-b	B1-b	B2-b	C3-b
12	D1-c	A1-b (m)	A1-b	C1-c	C1-c (m)	C2-c	D2-c	D3-c	B1-b	B2-b	C3-c
11	D1-b	A1-b (m)	A1-b	C1-b	C1-b (m)	C2-b	D2-b	D3-b	B1-b	B2-b	C3-b
10	D1-a	A1-a (m)	A1-a	C1-a	C1-a (m)	C2-a	D2-a	D3-a	B1-a	B2-a	C3-a
9	D1-b	A1-b (m)	A1-b	C1-b	C1-b (m)	C2-b	D2-b	D3-b	B1-b	B2-b	C3-b
8	D1-c	A1-b (m)	A1-b	C1-c	C1-c (m)	C2-c	D2-c	D3-c	B1-b	B2-b	C3-c
7	D1-b	A1-b (m)	A1-b	C1-b	C1-b (m)	C2-b	D2-b	D3-b	B1-b	B2-b	C3-b
6	D1-a	A1-a (m)	A1-a	C1-a	C1-a (m)	C2-a	D2-a	D3-a	B1-a	B2-a	C3-a
5	D1-b	A1-b (m)	A1-b	C1-b	C1-b (m)	C2-b	D2-b	D3-b	B1-b	B2-b	C3-b
4	D1-c	A1-b (m)	A1-b	C1-c	C1-c (m)	C2-c	D2-c	D3-c	B1-b	B2-b	C3-c
3	D1-b	A1-b (m)	A1-b	C1-b	C1-b (m)	C2-b	D2-b	D3-b	B1-b	B2-b	C3-b
2	D1-a	A1-a (m)	A1-a	C1-a	C1-a (m)	C2-a	D2-a	D3-a	B1-a	B2-a	C3-a



Storey/ Unit No.	12	13	14	15	16	17	18	19	20	21	22
	OCULUS SKY										
38	F2				F1						
37	D1-c	A1-b (m)	A1-b	C1-c	C1-c (m)	B4-b	E1-c	C4-c	B1-b	B3-b	C3-c
36	D1-b	A1-b (m)	A1-b	C1-b	C1-b (m)	B4-b	E1-b	C4-b	B1-b	B3-b	C3-b
35	D1-a	A1-a (m)	A1-a	C1-a	C1-a (m)	B4-a	E1-a	C4-a	B1-a	B3-a	C3-a
34	D1-B	A1-b (m)	A1-b	C1-b	C1-b (m)	B4-b	E1-b	C4-b	B1-b	B3-b	C3-b
33	D1-c	A1-b (m)	A1-b	C1-c	C1-c (m)	B4-b	E1-C	C4-c	B1-b	B3-b	C3-c
32	D1-b	A1-b (m)	A1-b	C1-b	C1-b (m)	B4-b	E1-b	C4-b	B1-b	B3-b	C3-b
31	D1-a	A1-a (m)	A1-a	C1-a	C1-a (m)	B4-a	E1-a	C4-a	B1-a	B3-a	C3-a
30	D1-b	A1-b (m)	A1-b	C1-b	C1-b (m)	B4-b	E1-b	C4-b	B1-b	B3-b	C3-b
29	D1-c	A1-b (m)	A1-b	C1-c	C1-c (m)	B4-b	E1-c	C4-c	B1-b	B3-b	C3-c
28	D1-B	A1-b (m)	A1-b	C1-b	C1-b (m)	B4-b	E1-b	C4-b	B1-b	B3-b	C3-b
27	D1-a	A1-a (m)	A1-a	C1-a	C1-a (m)	B4-a	E1-a	C4-a	B1-a	B3-a	C3-a
26	D1-b	A1-b (m)	A1-b	C1-b	C1-b (m)	B4-b	E1-b	C4-b	B1-b	B3-b	C3-b
25	D1-c	A1-b (m)	A1-b	C1-c	C1-c (m)	B4-b	E1-c	C4-c	B1-b	B3-b	C3-c
24	D1-B	A1-b (m)	A1-b	C1-b	C1-b (m)	B4-b	E1-b	C4-b	B1-b	B3-b	C3-b
23	D1-a	A1-a (m)	A1-a	C1-a	C1-a (m)	B4-a	E1-a	C4-a	B1-a	B3-a	C3-a
22	D1-b	A1-b (m)	A1-b	C1-b	C1-b (m)	B4-b	E1-b	C4-b	B1-b	B3-b	C3-b
21	D1-c	A1-b (m)	A1-b	C1-c	C1-c (m)	B4-b	E1-c	C4-c	B1-b	B3-b	C3-c
20	D1-b	A1-b (m)	A1-b	C1-b	C1-b (m)	B4-b	E1-b	C4-b	B1-b	B3-b	C3-b
19	D1-a	A1-a (m)	A1-a	C1-a	C1-a (m)	B4-a	E1-a	C4-a	B1-a	B3-a	C3-a
18	D1-b	A1-b (m)	A1-b	C1-b	C1-b (m)	B4-b	E1-b	C4-b	B1-b	B3-b	C3-b
17	D1-c	A1-b (m)	A1-b	C1-c	C1-c (m)	B4-b	E1-c	C4-c	B1-b	B3-b	C3-c
16	D1-b	A1-B (m)	A1-b	C1-b	C1-b (m)	B4-b	E1-b	C4-b	B1-b	B3-b	C3-b
15	D1-a	A1-a (m)	A1-a	C1-a	C1-a (m)	B4-a	E1-a	C4-a	B1-a	B3-a	C3-a
14	PRIVE TERRACE										
13	D1-b	A1-b (m)	A1-b	C1-b	C1-b (m)	B4-b	E1-b	C4-b	B1-b	B3-b	C3-b
12	D1-c	A1-b (m)	A1-b	C1-c	C1-c (m)	B4-b	E1-c	C4-c	B1-b	B3-b	C3-c
11	D1-b	A1-b (m)	A1-b	C1-b	C1-b (m)	B4-b	E1-b	C4-b	B1-b	B3-b	C3-b
10	D1-a	A1-a (m)	A1-a	C1-a	C1-a (m)	B4-a	E1-a	C4-a	B1-a	B3-a	C3-a
9	D1-b	A1-b (m)	A1-b	C1-b	C1-b (m)	B4-b	E1-b	C4-b	B1-b	B3-b	C3-b
8	D1-c	A1-b (m)	A1-b	C1-c	C1-c (m)	B4-b	E1-c	C4-c	B1-b	B3-b	C3-c
7	D1-b	A1-b (m)	A1-b	C1-b	C1-b (m)	B4-b	E1-b	C4-b	B1-b	B3-b	C3-b
6	D1-a	A1-a (m)	A1-a	C1-a	C1-a (m)	B4-a	E1-a	C4-a	B1-a	B3-a	C3-a
5	D1-b	A1-b (m)	A1-b	C1-b	C1-b (m)	B4-b	E1-b	C4-b	B1-b	B3-b	C3-b
4	D1-c	A1-b (m)	A1-b	C1-c	C1-c (m)	B4-b	E1-c	C4-c	B1-b	B3-b	C3-c
3	D1-b	A1-b (m)	A1-b	C1-b	C1-b (m)	B4-b	E1-b	C4-b	B1-b	B3-b	C3-b
2	D1-a	A1-a (m)	A1-a	C1-a	C1-a (m)	B4-a	E1-a	C4-a	B1-a	B3-a	C3-a





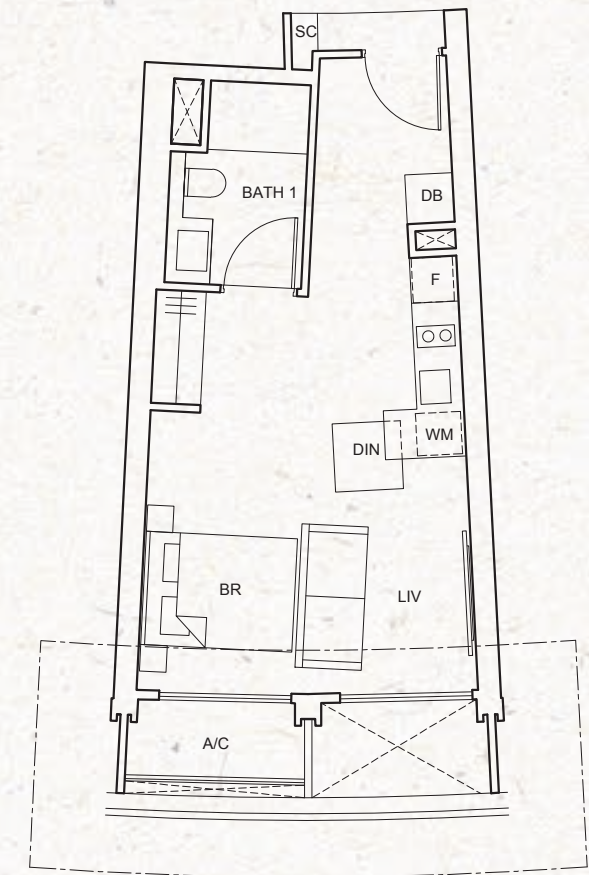
One
Pearl
Bank

FLOOR PLANS

TYPE A1-a(m)
40 sq m / 431 sq ft

#02-02; #06-02; #10-02; #14-02; #19-02;
#23-02; #27-02; #31-02; #35-02;

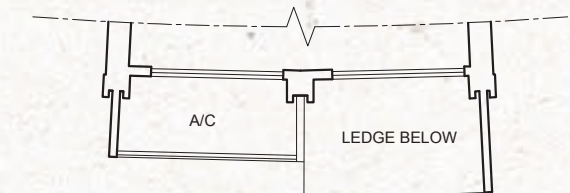
#02-13; #06-13; #10-13; #15-13; #19-13;
#23-13; #27-13; #31-13; #35-13



TYPE A1-b(m)
40 sq m / 431 sq ft

#03-02; #04-02; #05-02; #07-02; #08-02;
#09-02; #11-02; #12-02; #13-02; #15-02;
#16-02; #17-02; #20-02; #21-02; #22-02;
#24-02; #25-02; #26-02; #28-02; #29-02;
#30-02; #32-02; #33-02; #34-02; #36-02;
#37-02;

#03-13; #04-13; #05-13; #07-13; #08-13;
#09-13; #11-13; #12-13; #13-13; #16-13;
#17-13; #18-13; #20-13; #21-13; #22-13;
#24-13; #25-13; #26-13; #28-13; #29-13;
#30-13; #32-13; #33-13; #34-13; #36-13;
#37-13;



KEY PLAN

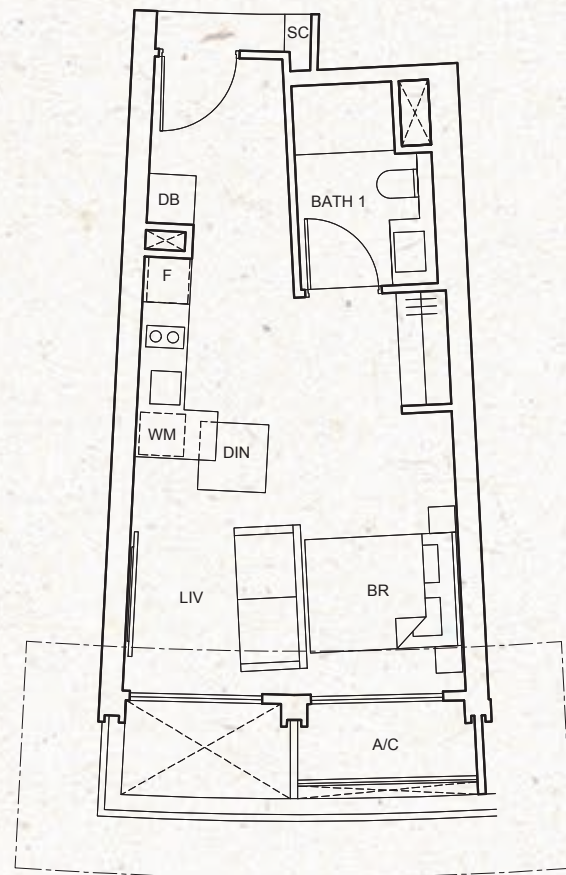
All floor areas indicated are inclusive of AC Ledge, Balcony and Strata Void where applicable. The Balcony shall not be enclosed. Only approved balcony screens are to be used. For an illustration of the approved balcony screen, please refer to the diagram annexed hereto as "Annexure".

STUDIO

TYPE A1-a
40 sq m / 431 sq ft

#02-03; #06-03; #10-03; #14-03; #19-03;
#23-03; #27-03; #31-03; #35-03;

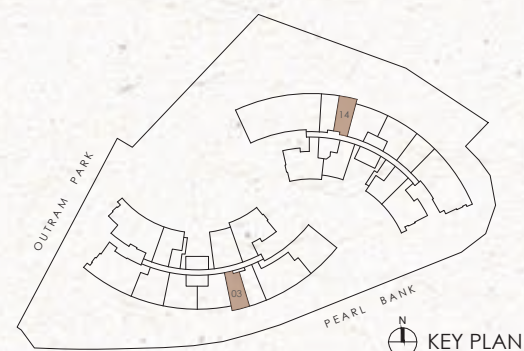
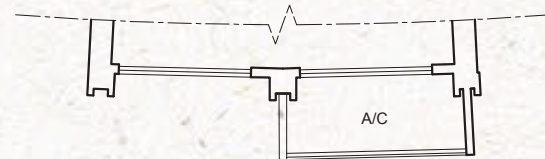
#02-14; #06-14; #10-14; #15-14; #19-14;
#23-14; #27-14; #31-14; #35-14



TYPE A1-b
40 sq m / 431 sq ft

#03-03; #04-03; #05-03; #07-03; #08-03;
#09-03; #11-03; #12-03; #13-03; #15-03;
#16-03; #17-03; #20-03; #21-03; #22-03;
#24-03; #25-03; #26-03; #28-03; #29-03;
#30-03; #32-03; #33-03; #34-03; #36-03;
#37-03;

#03-14; #04-14; #05-14; #07-14; #08-14;
#09-14; #11-14; #12-14; #13-14; #16-14;
#17-14; #18-14; #20-14; #21-14; #22-14;
#24-14; #25-14; #26-14; #28-14; #29-14;
#30-14; #32-14; #33-14; #34-14; #36-14;
#37-14;



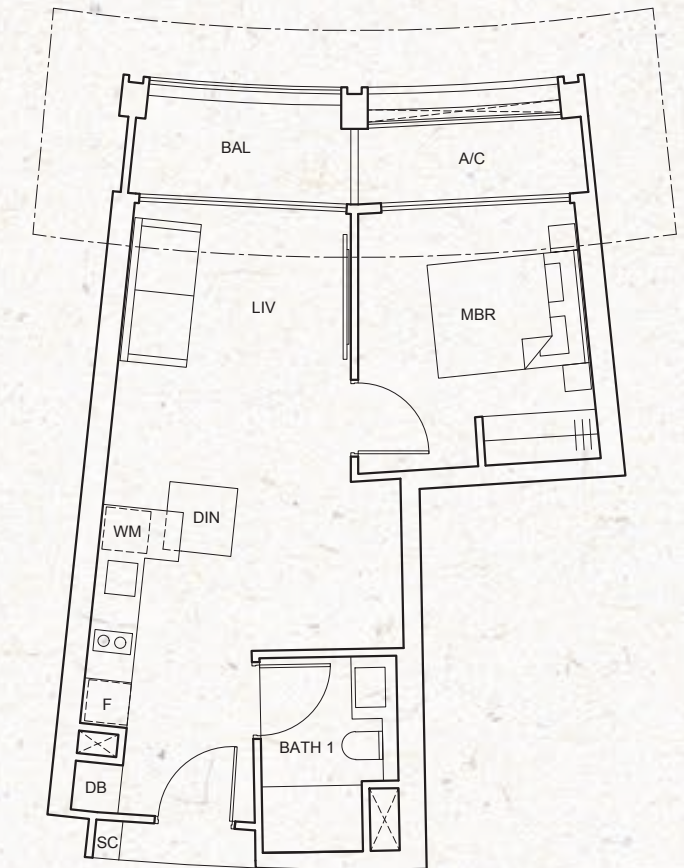
All floor areas indicated are inclusive of AC Ledge, Balcony and Strata Void where applicable. The Balcony shall not be enclosed. Only approved balcony screens are to be used. For an illustration of the approved balcony screen, please refer to the diagram annexed hereto as "Annexure".

1-BEDROOM

TYPE B1-a
53 sq m / 570 sq ft

#02-09; #06-09; #10-09; #15-09; #19-09;
#23-09; #27-09; #31-09; #35-09;

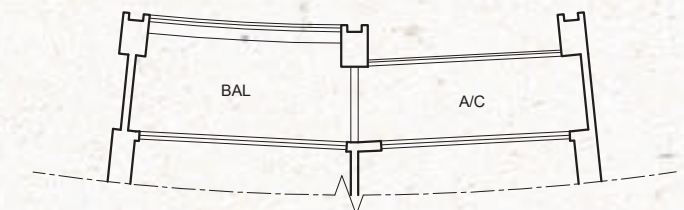
#02-20; #06-20; #10-20; #15-20; #19-20;
#23-20; #27-20; #31-20; #35-20



TYPE B1-b
53 sq m / 570 sq ft

#03-09; #04-09; #05-09; #07-09; #08-09;
#09-09; #11-09; #12-09; #13-09; #15-09;
#16-09; #17-09; #18-09; #20-09; #21-09;
#22-09; #24-09; #25-09; #26-09; #28-09;
#29-09; #30-09; #32-09; #33-09; #34-09;
#36-09; #37-09;

#03-20; #04-20; #05-20; #07-20; #08-20;
#09-20; #11-20; #12-20; #13-20; #16-20;
#17-20; #18-20; #20-20; #21-20; #22-20;
#24-20; #25-20; #26-20; #28-20; #29-20;
#30-20; #32-20; #33-20; #34-20; #36-20;
#37-20;

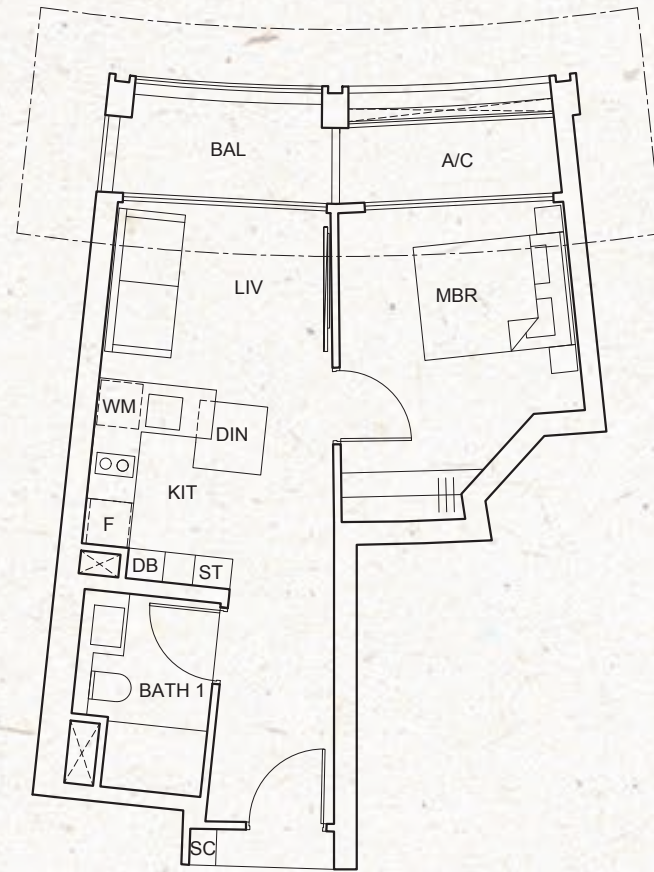


All floor areas indicated are inclusive of AC Ledge, Balcony and Strata Void where applicable. The Balcony shall not be enclosed. Only approved balcony screens are to be used. For an illustration of the approved balcony screen, please refer to the diagram annexed hereto as "Annexure".

1-BEDROOM

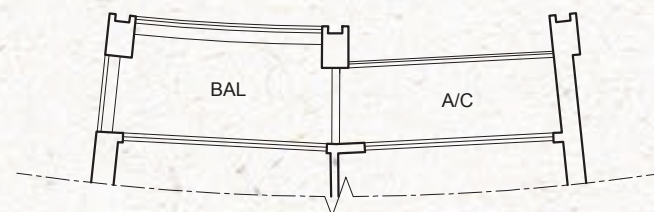
TYPE B2-a
49 sq m / 527 sq ft

#02-10; #06-10; #10-10; #14-10; #19-10;
#23-10; #27-10; #31-10; #35-10;



TYPE B2-b
49 sq m / 527 sq ft

#03-10; #04-10; #05-10; #07-10; #08-10;
#09-10; #11-10; #12-10; #13-10; #15-10;
#16-10; #17-10; #20-10; #21-10; #22-10;
#24-10; #25-10; #26-10; #28-10; #29-10;
#30-10; #32-10; #33-10; #34-10; #36-10;
#37-10

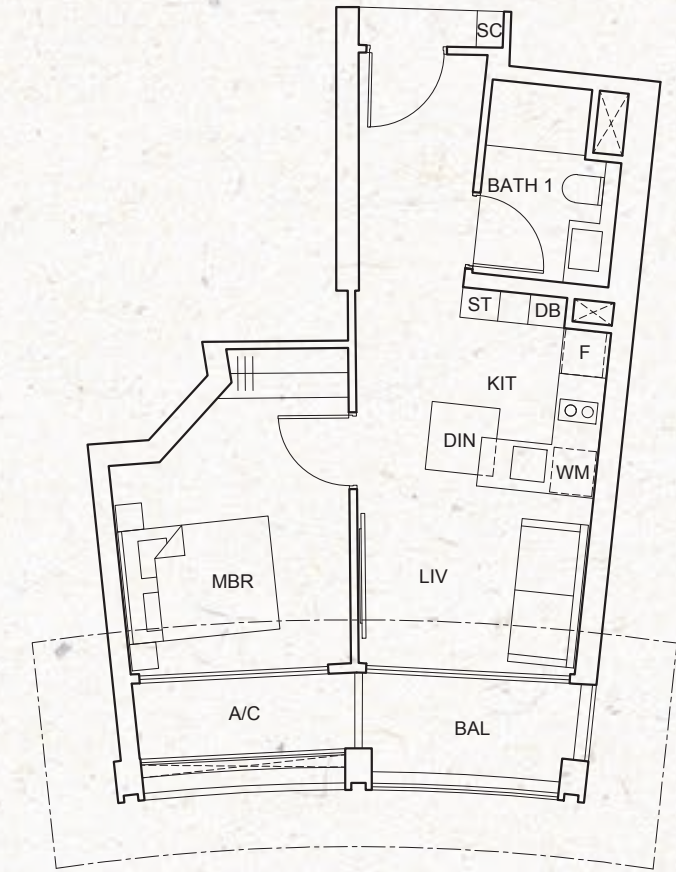


All floor areas indicated are inclusive of AC Ledge, Balcony and Strata Void where applicable. The Balcony shall not be enclosed. Only approved balcony screens are to be used. For an illustration of the approved balcony screen, please refer to the diagram annexed hereto as "Annexure".

1-BEDROOM

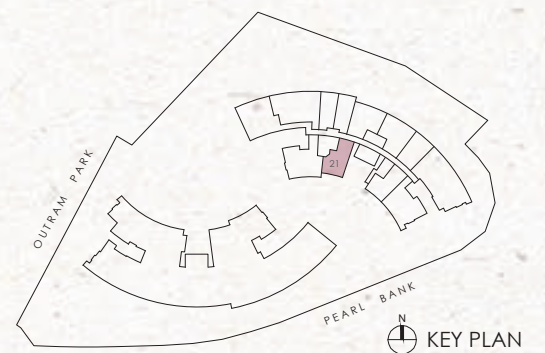
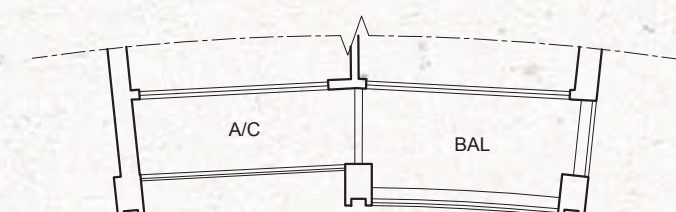
TYPE B3-a
49 sq m / 527 sq ft

#02-21; #06-21; #10-21; #15-21; #19-21;
#23-21; #27-21; #31-21; #35-21;



TYPE B3-b
49 sq m / 527 sq ft

#03-21; #04-21; #05-21; #07-21; #08-21;
#09-21; #11-21; #12-21; #13-21; #16-21;
#17-21; #18-21; #20-21; #21-21; #22-21;
#24-21; #25-21; #26-21; #28-21; #29-21;
#30-21; #32-21; #33-21; #34-21; #36-21;
#37-21

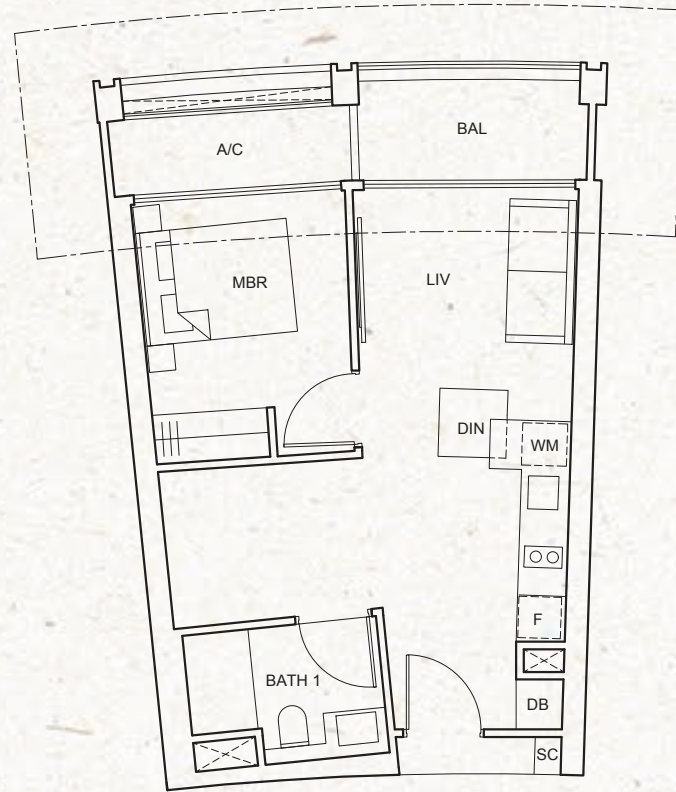


All floor areas indicated are inclusive of AC Ledge, Balcony and Strata Void where applicable. The Balcony shall not be enclosed. Only approved balcony screens are to be used. For an illustration of the approved balcony screen, please refer to the diagram annexed hereto as "Annexure".

1-BEDROOM

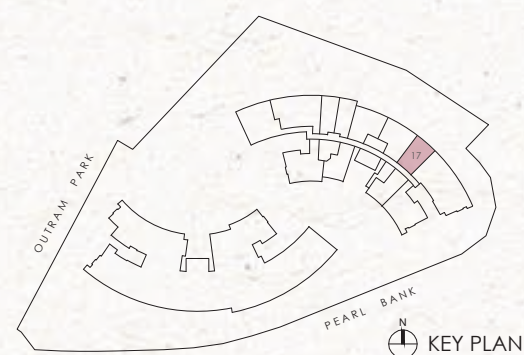
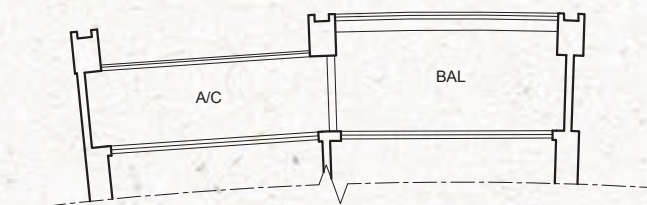
TYPE B4-a
52 sq m / 560 sq ft

#02-17; #06-17; #10-17; #15-17; #19-17;
#23-17; #27-17; #31-17; #35-17;



TYPE B4-b
52 sq m / 560 sq ft
INCLUSIVE OF XX SQM AC LEDGE

#03-17; #04-17; #05-17; #07-17; #08-17;
#09-17; #11-17; #12-17; #13-17; #16-17;
#17-17; #18-17; #20-17; #21-17; #22-17;
#24-17; #25-17; #26-17; #28-17; #29-17;
#30-17; #32-17; #33-17; #34-17; #36-17;
#37-17;



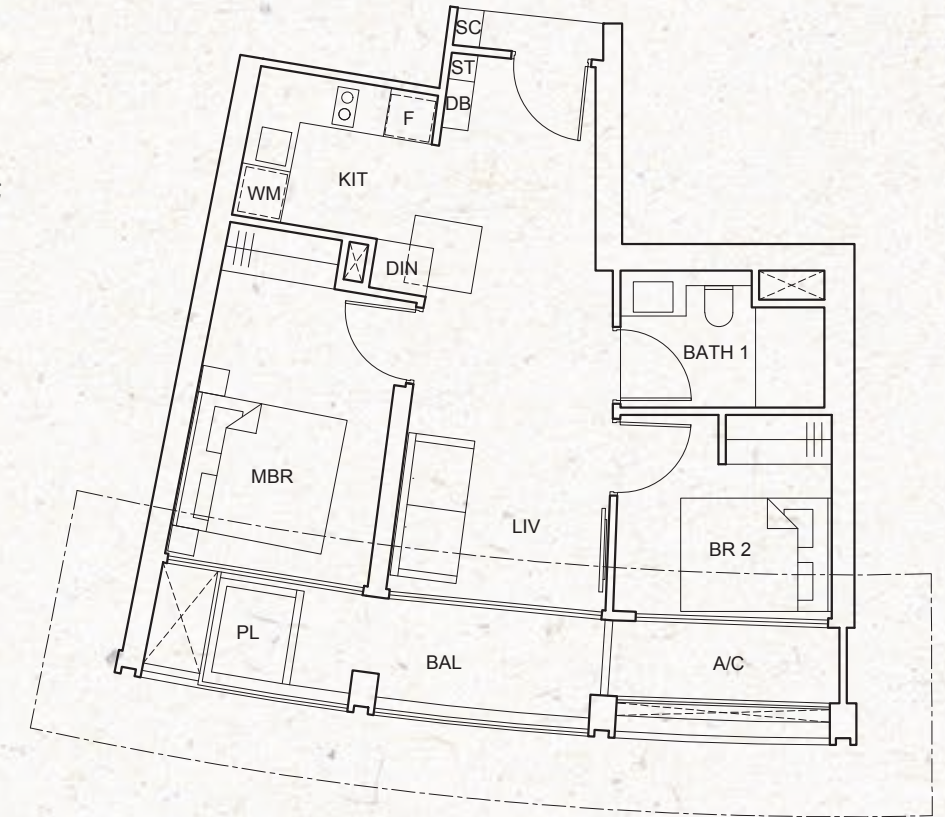
All floor areas indicated are inclusive of AC Ledge, Balcony and Strata Void where applicable. The Balcony shall not be enclosed. Only approved balcony screens are to be used. For an illustration of the approved balcony screen, please refer to the diagram annexed hereto as "Annexure".

2-BEDROOM

TYPE C1-a (m)
65 sq m / 700 sq ft

#02-05; #06-05; #10-05; #14-05; #19-05;
#23-05; #27-05; #31-05; #35-05;

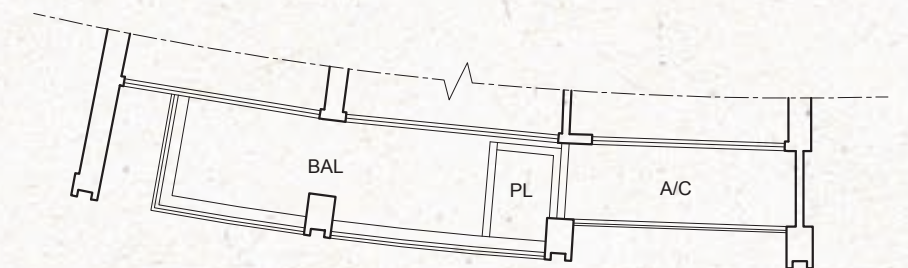
#02-16; #06-16; #10-16; #15-16; #19-16;
#23-16; #27-16; #31-16; #35-16;



TYPE C1-b (m)
65 sq m / 700 sq ft

#03-05; #05-05; #07-05; #09-05; #11-05;
#13-05; #15-05; #17-05; #20-05; #22-05;
#24-05; #26-05; #28-05; #30-05; #32-05;
#34-05; #36-05;

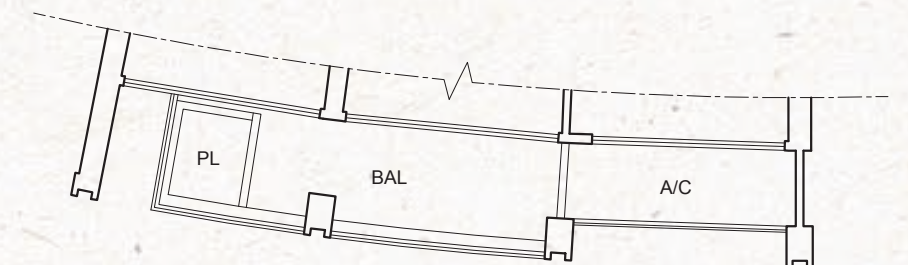
#03-16; #05-16; #07-16; #09-16; #11-16;
#13-16; #16-16; #18-16; #20-16; #22-16;
#24-16; #26-16; #28-16; #30-16; #32-16;
#34-16; #36-16;



TYPE C1-c (m)
65 sq m / 700 sq ft

#04-05; #08-05; #12-05; #16-05; #21-05;
#25-05; #29-05; #33-05; #37-05;

#04-16; #08-16; #12-16; #17-16; #21-16;
#25-16; #29-16; #33-16; #37-16;



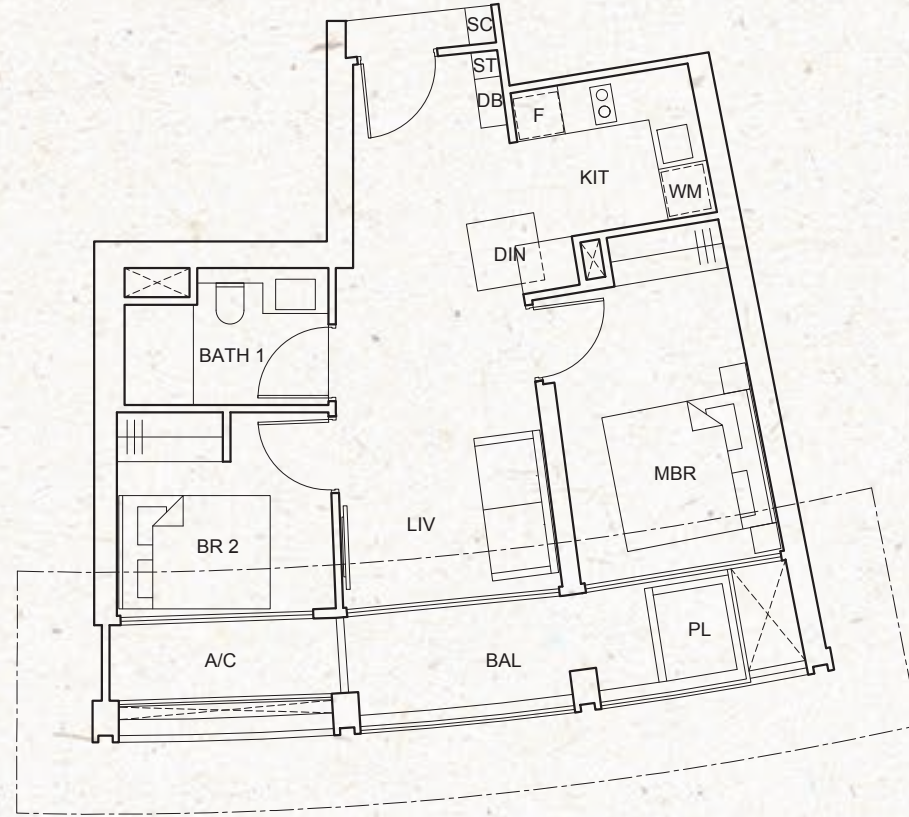
All floor areas indicated are inclusive of AC Ledge, Balcony and Strata Void where applicable. The Balcony shall not be enclosed. Only approved balcony screens are to be used. For an illustration of the approved balcony screen, please refer to the diagram annexed hereto as "Annexure".

2-BEDROOM

TYPE C1-a
65 sq m / 700 sq ft

#02-04; #06-04; #10-04; #14-04; #19-04;
#23-04; #27-04; #31-04; #35-04;

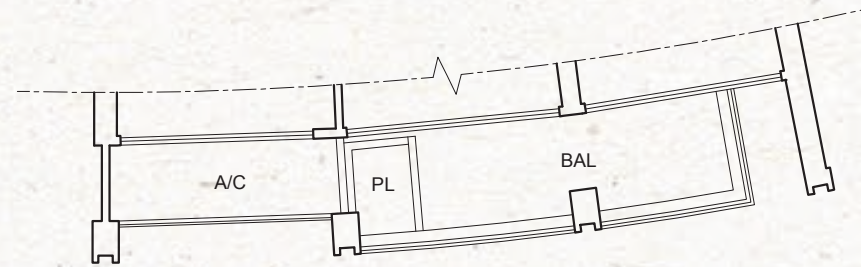
#02-15; #06-15; #10-15; #15-15; #19-15;
#23-15; #27-15; #31-15; #35-15;



TYPE C1-b
65 sq m / 700 sq ft

#03-04; #05-04; #07-04; #09-04; #11-04;
#13-04; #15-04; #17-04; #20-04; #22-04;
#24-04; #26-04; #28-04; #30-04; #32-04;
#34-04; #36-04;

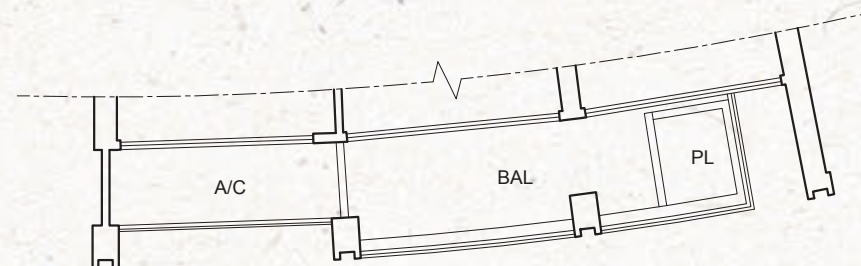
#03-15; #05-15; #07-15; #09-15; #11-15;
#13-15; #16-15; #18-15; #20-15; #22-15;
#24-15; #26-15; #28-15; #30-15; #32-15;
#34-15; #36-15;



TYPE C1-c
65 sq m / 700 sq ft

#04-04; #08-04; #12-04; #16-04; #21-04;
#25-04; #29-04; #33-04; #37-04;

#04-15; #08-15; #12-15; #17-15; #21-15;
#25-15; #29-15; #33-15; #37-15;

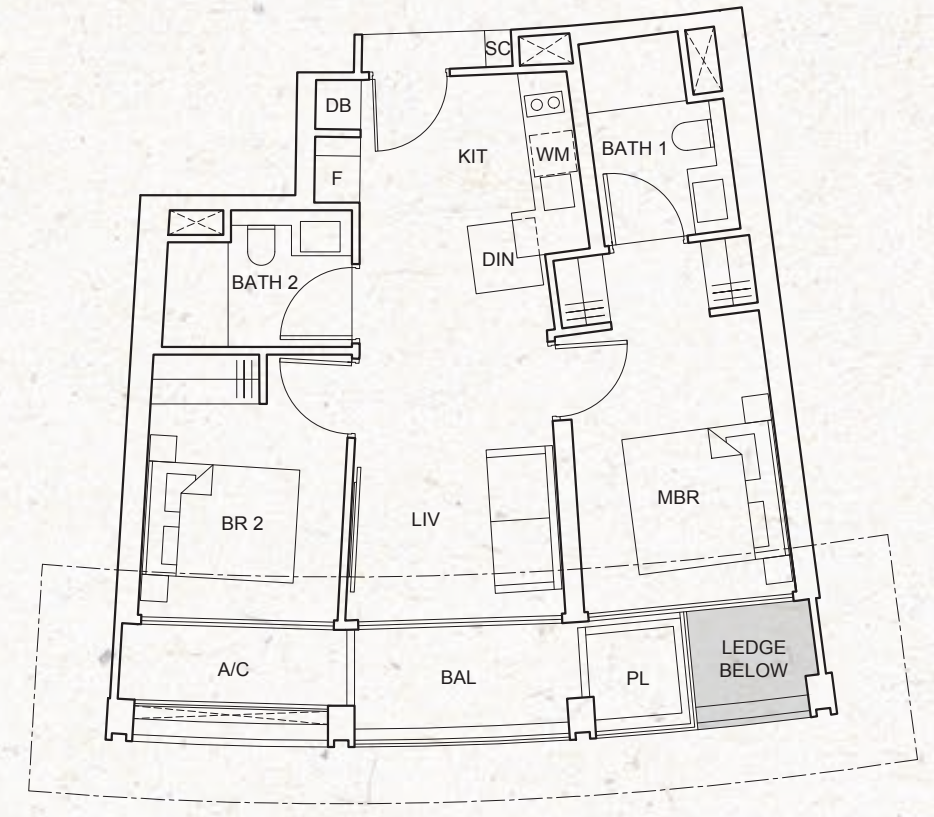


All floor areas indicated are inclusive of AC Ledge, Balcony and Strata Void where applicable.

2-BEDROOM

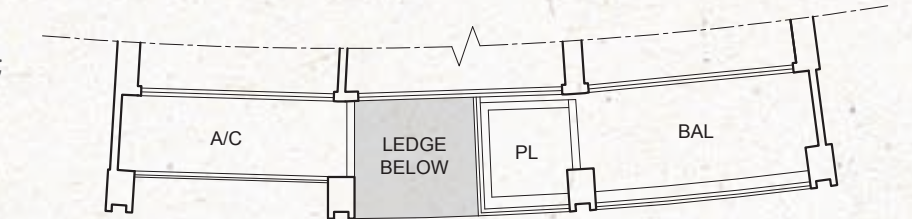
TYPE C2-a
69 sq m / 743 sq ft

#02-06; #06-06; #10-06; #14-06; #19-06;
#23-06; #27-06; #31-06; #35-06



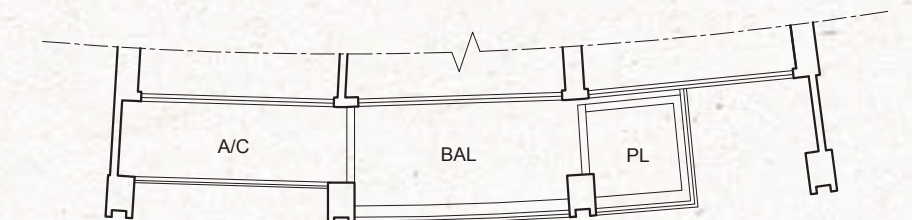
TYPE C2-b
69 sq m / 743 sq ft

#03-06; #05-06; #07-06; #09-06; #11-06;
#13-06; #15-06; #17-06; #20-06; #22-06;
#24-06; #26-06; #28-06; #30-06; #32-06;
#34-06; #36-06



TYPE C2-c
69 sq m / 743 sq ft

#04-06; #08-06; #12-06; #16-06; #21-06;
#25-06; #29-06; #33-06; #37-06



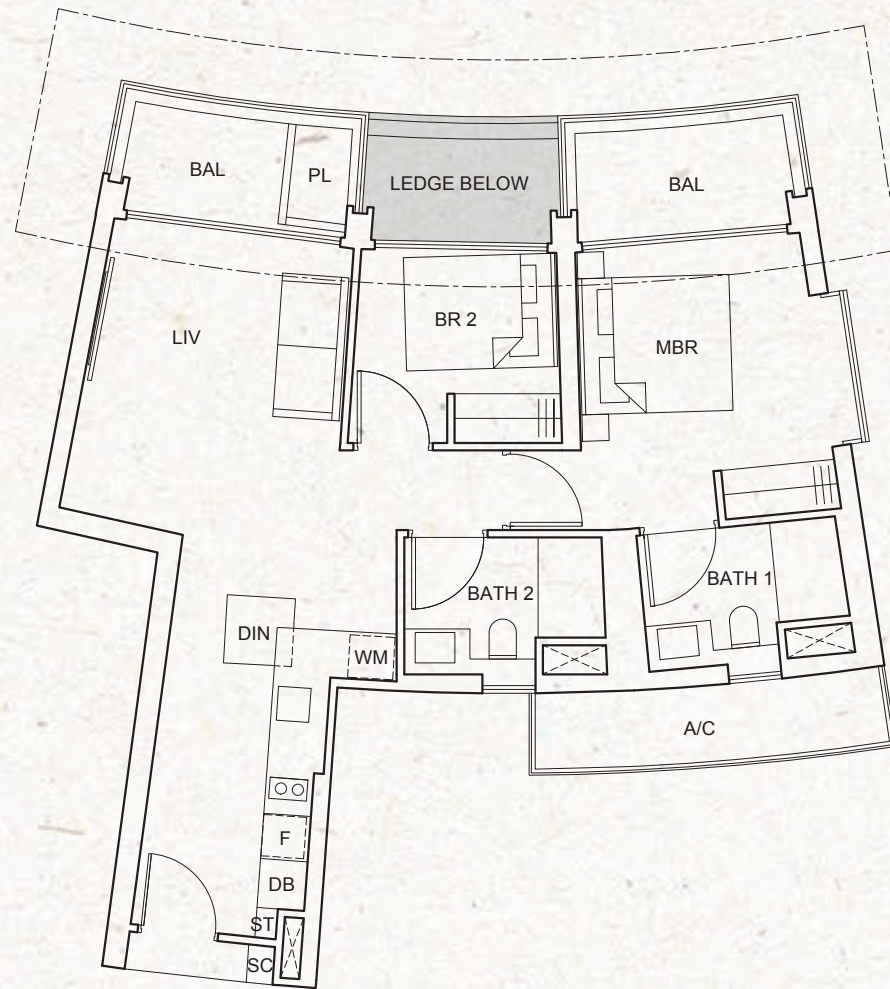
All floor areas indicated are inclusive of AC Ledge, Balcony and Strata Void where applicable.

2-BEDROOM

TYPE C3-a
83 sq m / 893 sq ft

#02-11; #06-11; #10-11; #14-11; #19-11;
#23-11; #27-11; #31-11; #35-11;

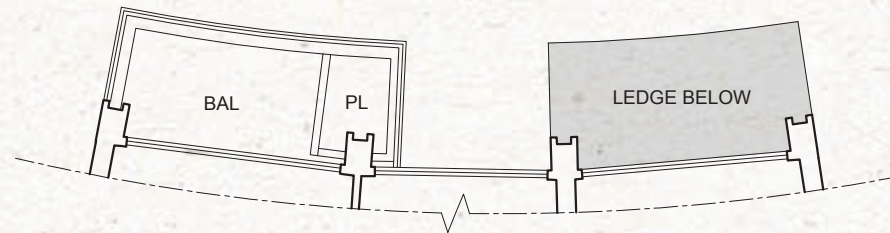
#02-22; #06-22; #10-22; #15-22; #19-22;
#23-22; #27-22; #31-22; #35-22



TYPE C3-b
78 sq m / 840 sq ft

#03-11; #05-11; #07-11; #09-11; #11-11;
#13-11; #15-11; #17-11; #20-11; #22-11;
#24-11; #26-11; #28-11; #30-11; #32-11;
#34-11; #36-11;

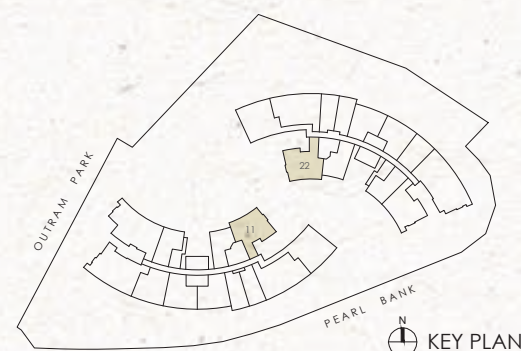
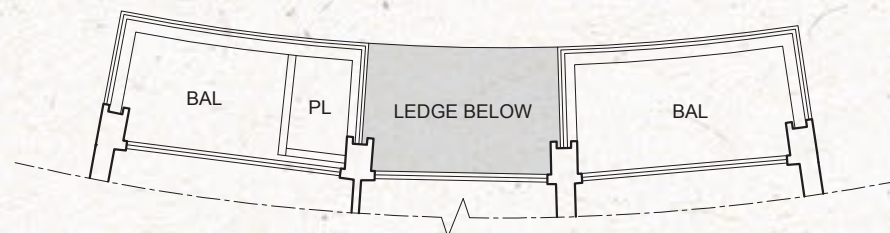
#03-22; #05-22; #07-22; #09-22; #11-22;
#13-22; #16-22; #18-22; #20-22; #22-22;
#24-22; #26-22; #28-22; #30-22; #32-22;
#34-22; #36-22



TYPE C3-c
83 sq m / 893 sq ft

#04-11; #08-11; #12-11; #16-11; #21-11;
#25-11; #29-11; #33-11; #37-11;

#04-22; #08-22; #12-22; #17-22; #21-22;
#25-22; #29-22; #33-22; #37-22

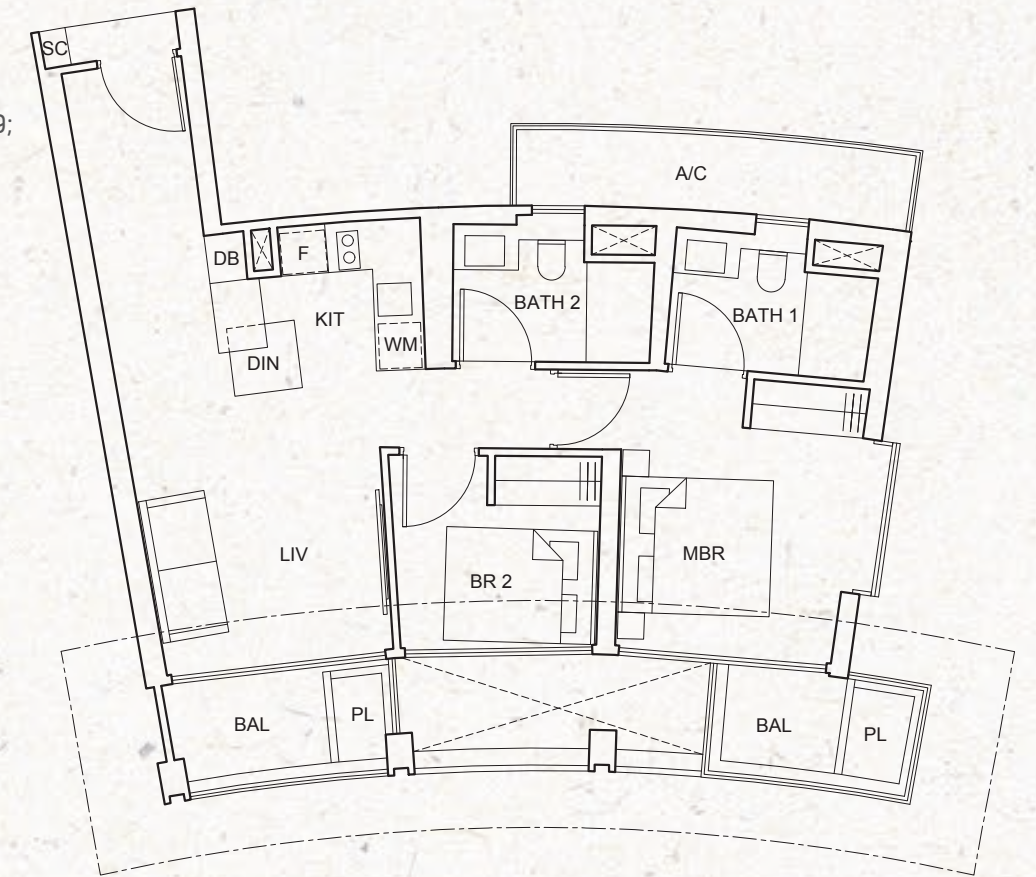


All floor areas indicated are inclusive of AC Ledge, Balcony and Strata Void where applicable. The Balcony shall not be enclosed. Only approved balcony screens are to be used. For an illustration of the approved balcony screen, please refer to the diagram annexed hereto as "Annexure".

2-BEDROOM

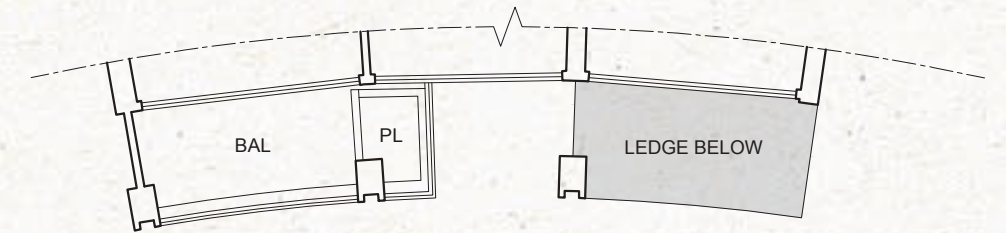
TYPE C4-a
78 sq m / 840 sq ft

#02-19; #06-19; #10-19; #15-19; #19-19;
#23-19; #27-19; #31-19; #35-19



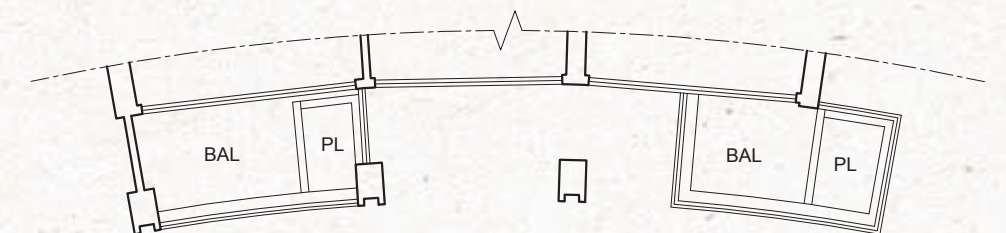
TYPE C4-b
75 sq m / 807 sq ft

#03-19; #05-19; #07-19; #09-19; #11-19;
#13-19; #16-19; #18-19; #20-19; #22-19;
#24-19; #26-19; #28-19; #30-19; #32-19;
#34-19; #36-19



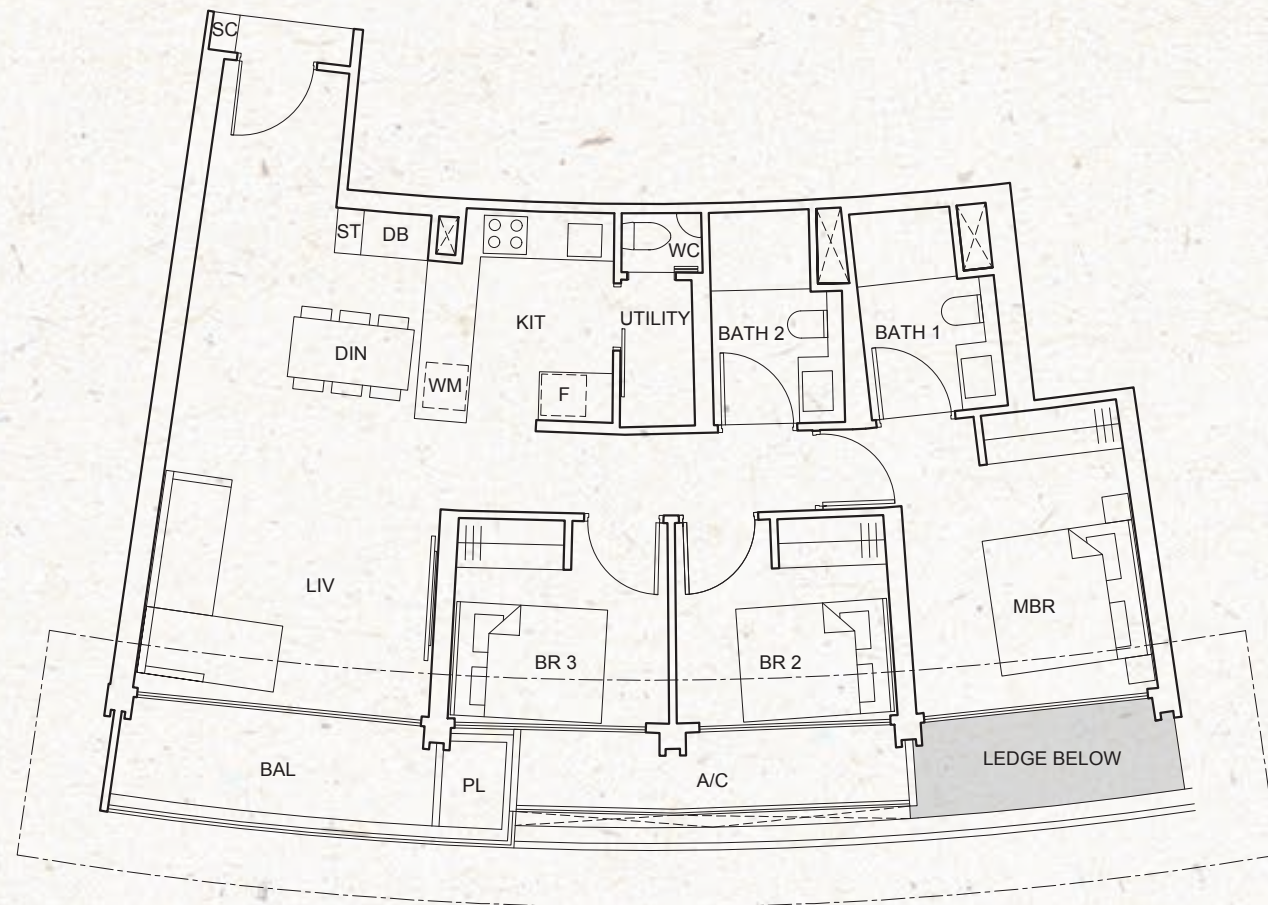
TYPE C4-c
78 sq m / 840 sq ft

#04-19; #08-19; #12-19; #17-19; #21-19;
#25-19; #29-19; #33-19; #37-19



All floor areas indicated are inclusive of AC Ledge, Balcony and Strata Void where applicable. The Balcony shall not be enclosed. Only approved balcony screens are to be used. For an illustration of the approved balcony screen, please refer to the diagram annexed hereto as "Annexure".

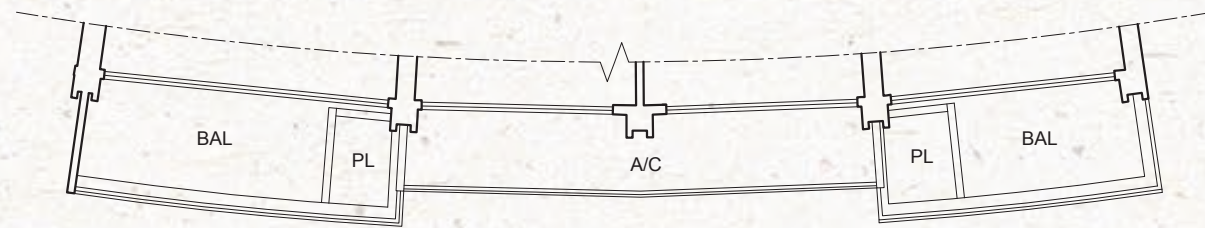
3-BEDROOM



TYPE D1-a
102 sq m / 1,098 sq ft

#02-01; #06-01; #10-01; #14-01;
#19-01; #23-01; #27-01; #31-01;
#35-01;

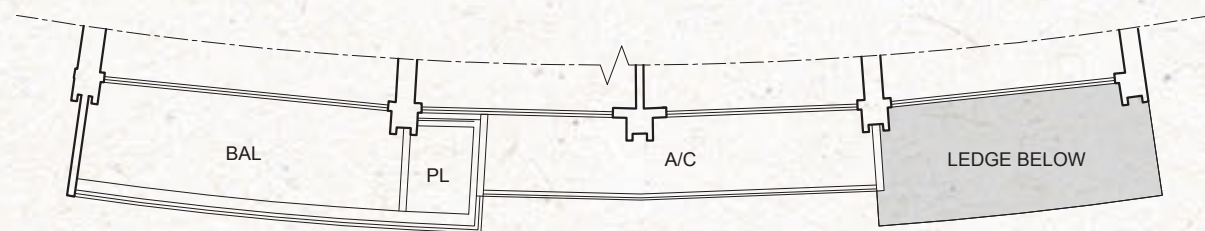
#02-12; #06-12; #10-12; #15-12;
#19-12; #23-12; #27-12; #31-12;
#35-12



TYPE D1-b
107 sq m / 1,152 sq ft

#03-01; #05-01; #07-01; #09-01; #11-01;
#13-01; #15-01; #17-01; #20-01; #22-01;
#24-01; #26-01; #28-01; #30-01; #32-01;
#34-01; #36-01;

#03-12; #05-12; #07-12; #09-12; #11-12;
#13-12; #16-12; #18-12; #20-12; #22-12;
#24-12; #26-12; #28-12; #30-12; #32-12;
#34-12; #36-12



TYPE D1-c
102 sq m / 1,098 sq ft

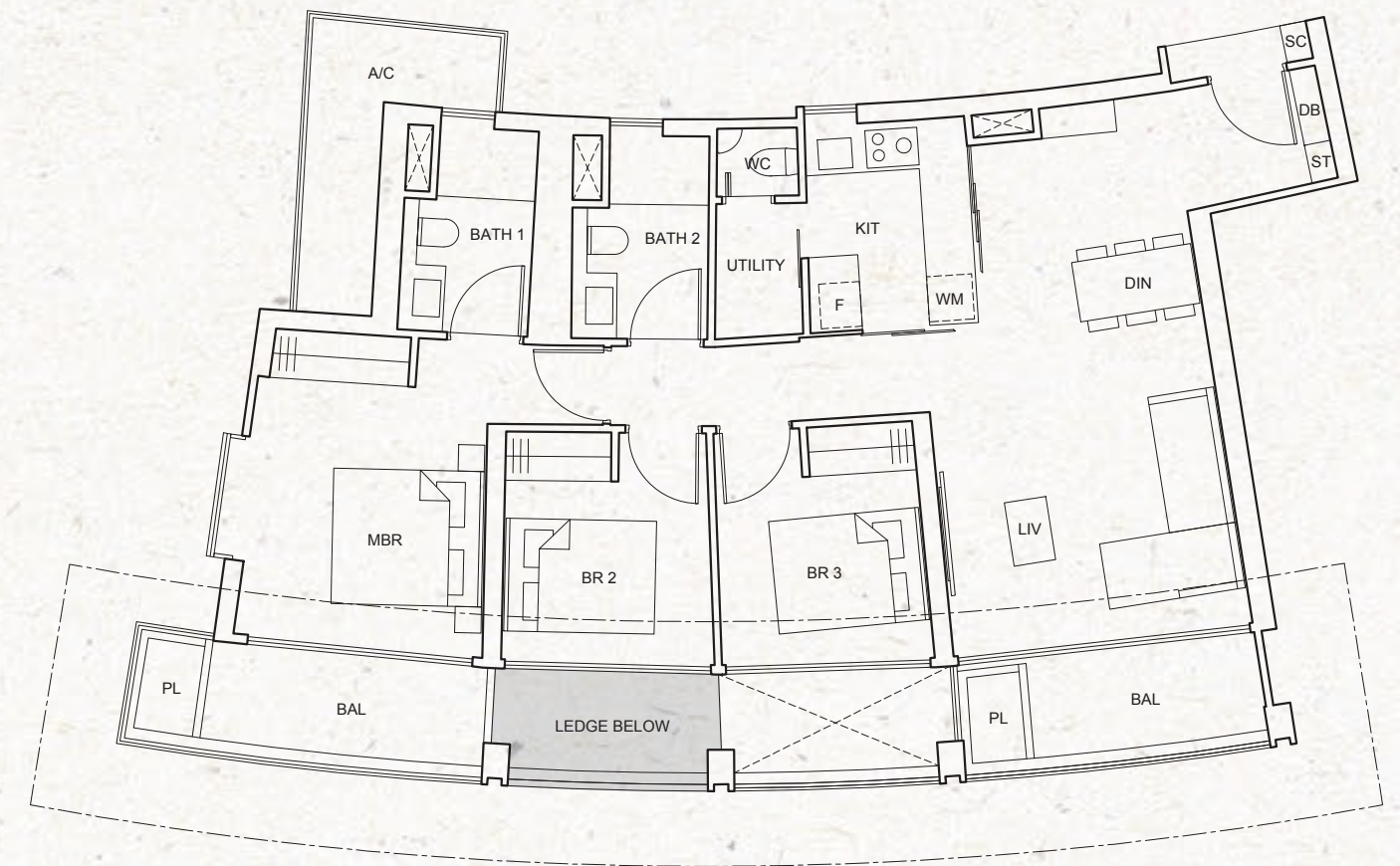
#04-01; #08-01; #12-01; #16-01; #21-01;
#25-01; #29-01; #33-01; #37-01;

#04-12; #08-12; #12-12; #17-12; #21-12;
#25-12; #29-12; #33-12; #37-12



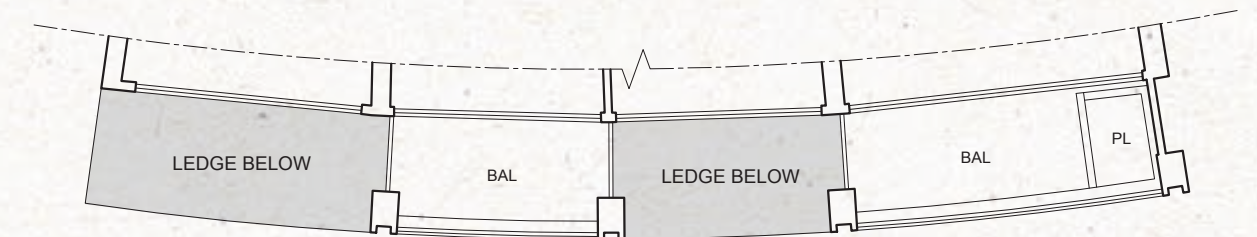
All floor areas indicated are inclusive of AC Ledge, Balcony and Strata Void where applicable. The Balcony shall not be enclosed. Only approved balcony screens are to be used. For an illustration of the approved balcony screen, please refer to the diagram annexed hereto as "Annexure".

3-BEDROOM



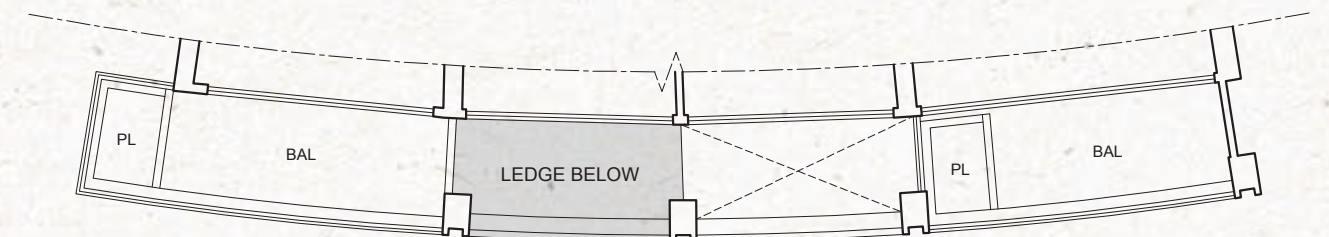
TYPE D2-a
113 sq m / 1,216 sq ft

#02-07; #06-07; #10-07; #14-07; #19-07;
#23-07; #27-07; #31-07; #35-07



TYPE D2-b
110 sq m / 1,184 sq ft

#03-07; #05-07; #07-07; #09-07; #11-07;
#13-07; #15-07; #17-07; #20-07; #22-07;
#24-07; #26-07; #28-07; #30-07; #32-07;
#34-07; #36-07



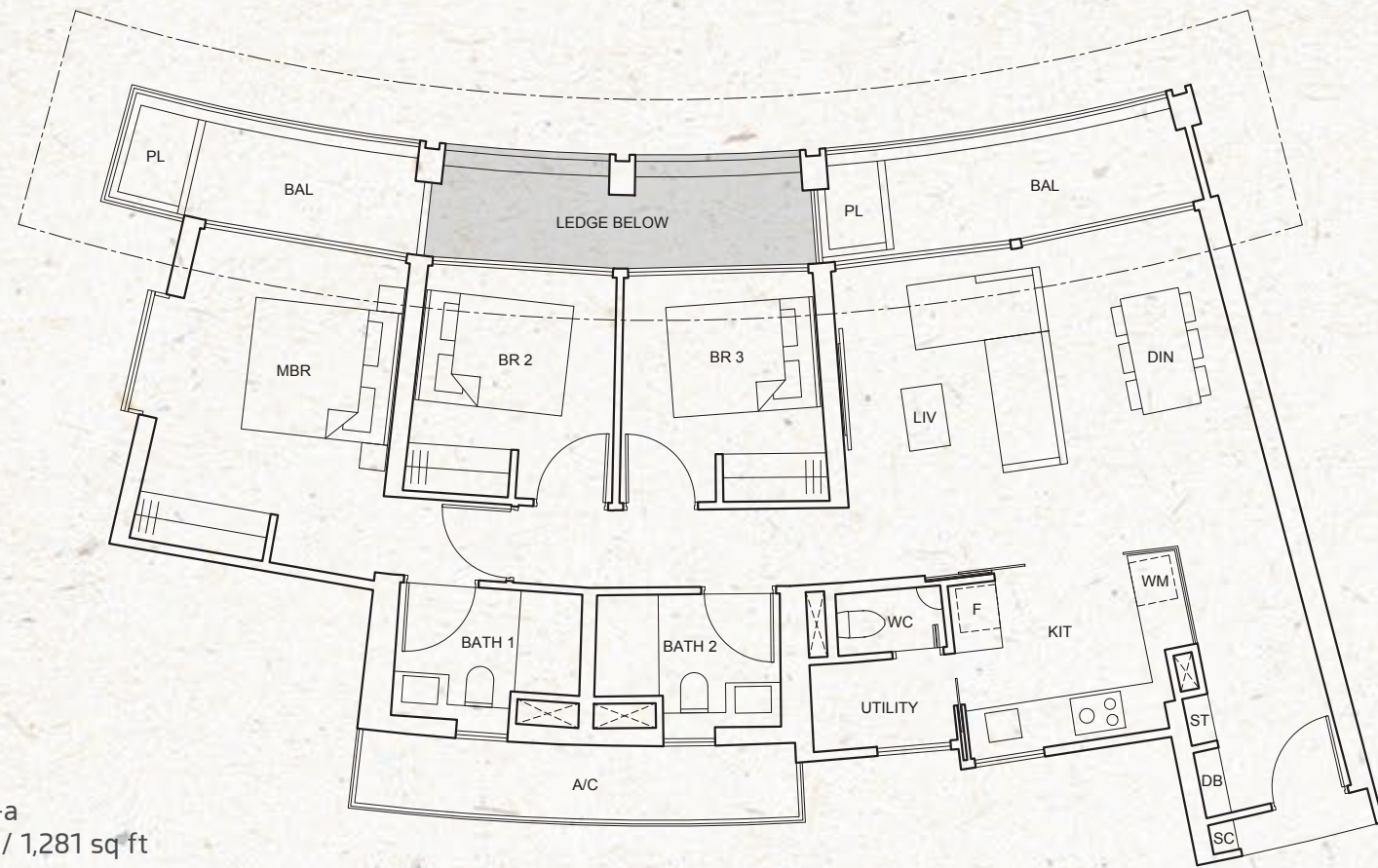
TYPE D2-c
113 sq m / 1,216 sq ft

#04-07; #08-07; #12-07; #16-07; #21-07;
#25-07; #29-07; #33-07; #37-07



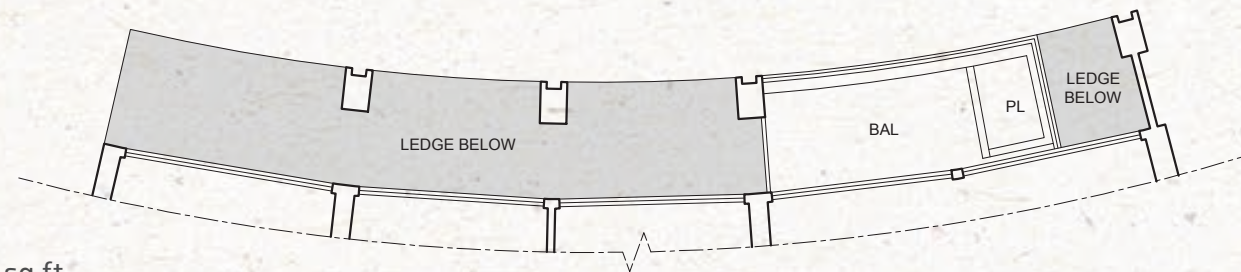
All floor areas indicated are inclusive of AC Ledge, Balcony and Strata Void where applicable. The Balcony shall not be enclosed. Only approved balcony screens are to be used. For an illustration of the approved balcony screen, please refer to the diagram annexed hereto as "Annexure".

3-BEDROOM



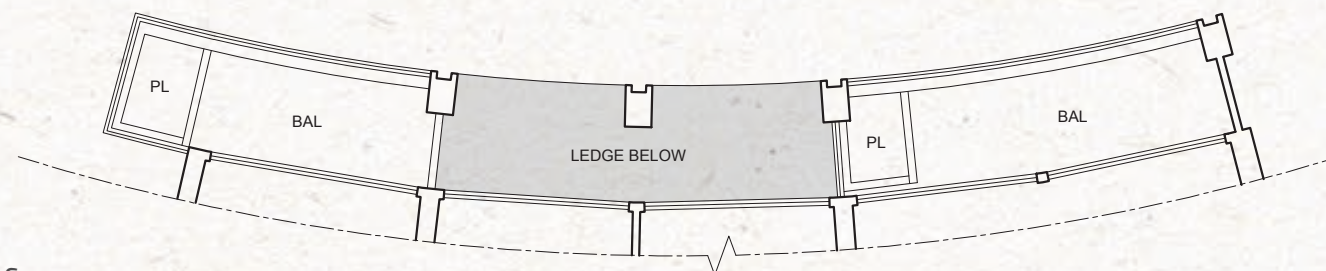
TYPE D3-a
119 sq m / 1,281 sq ft

#02-08; #06-08; #10-08; #14-08; #19-08;
#23-08; #27-08; #31-08; #35-08



TYPE D3-b
111 sq m / 1,195 sq ft

#03-08; #05-08; #07-08; #09-08; #11-08;
#13-08; #15-08; #17-08; #20-08; #22-08;
#24-08; #26-08; #28-08; #30-08; #32-08;
#34-08; #36-08



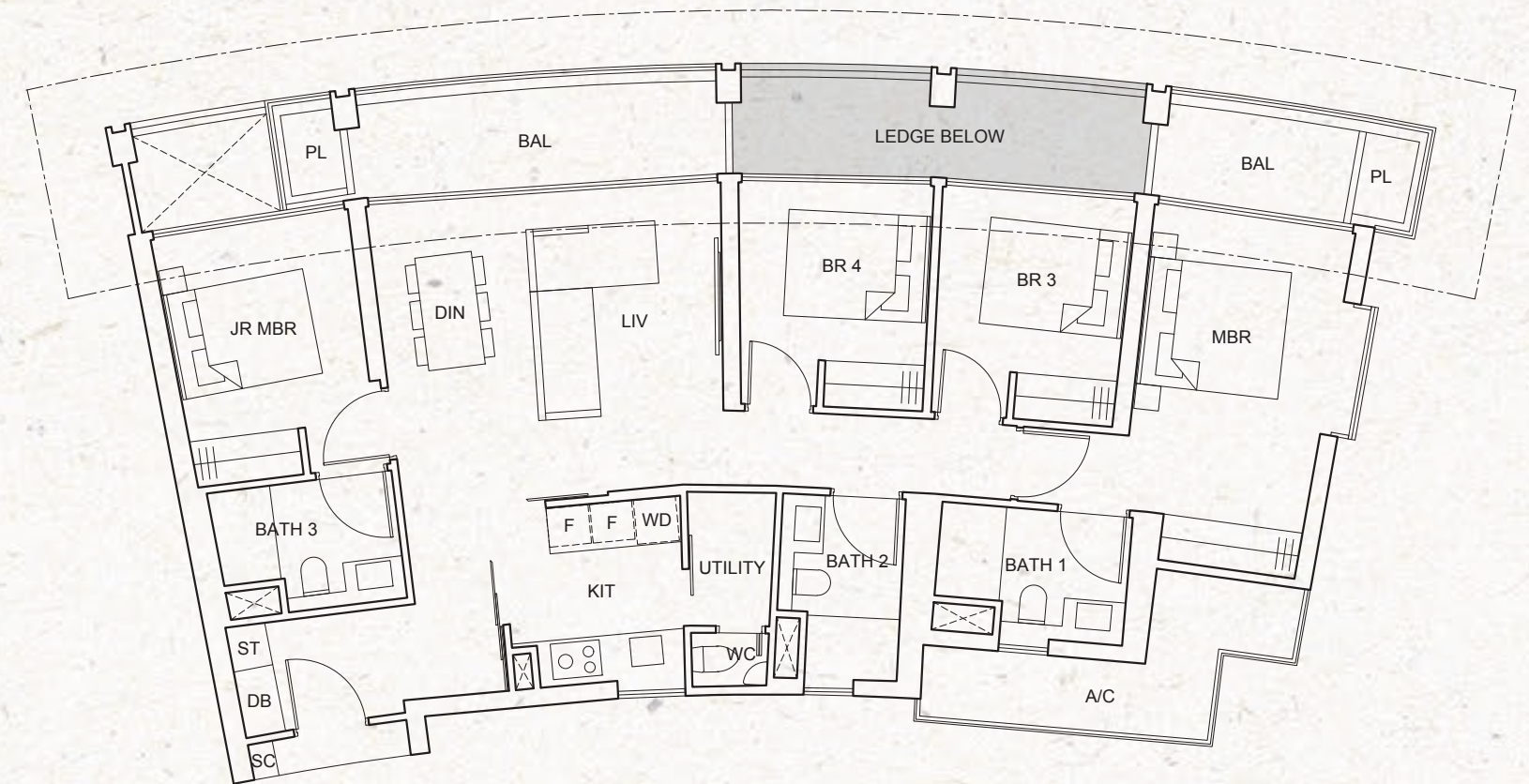
TYPE D3-c
119 sq m / 1,281 sq ft

#04-08; #08-08; #12-08; #16-08; #21-08;
#25-08; #29-08; #33-08; #37-08



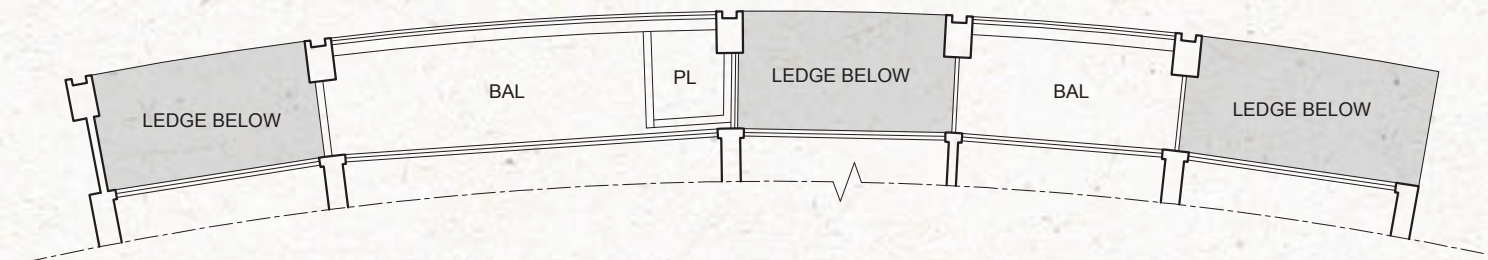
All floor areas indicated are inclusive of AC Ledge, Balcony and Strata Void where applicable. The Balcony shall not be enclosed. Only approved balcony screens are to be used. For an illustration of the approved balcony screen, please refer to the diagram annexed hereto as "Annexure".

4-BEDROOM



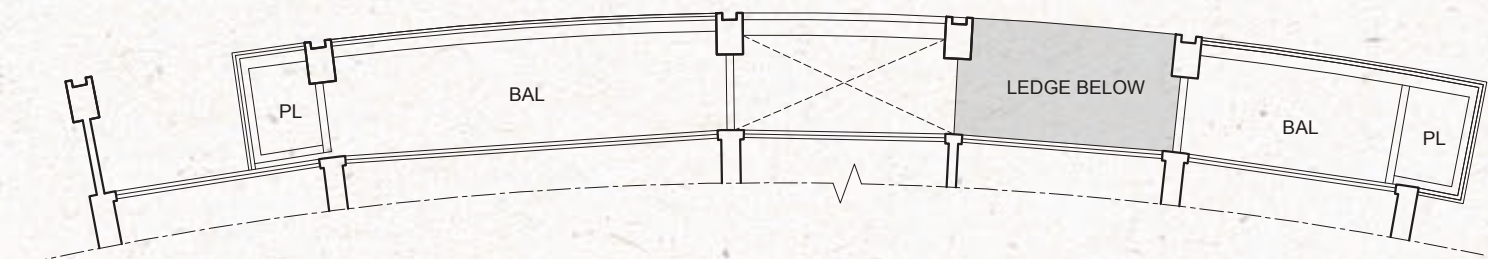
TYPE E1-a
133 sq m / 1,432 sq ft

#02-18; #06-18; #10-18; #15-18; #19-18;
#23-18; #27-18; #31-18; #35-18



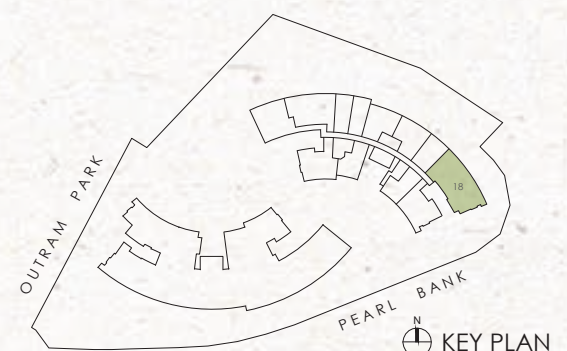
TYPE E1-b
130 sq m / 1,399 sq ft

#03-18; #05-18; #07-18; #09-18; #11-18;
#13-18; #16-18; #18-18; #20-18; #22-18;
#24-18; #26-18; #28-18; #30-18; #32-18;
#34-18; #36-18



TYPE E1-c
133 sq m / 1,432 sq ft

#04-18; #08-18; #12-18; #17-18; #21-18;
#25-18; #29-18; #33-18; #37-18



All floor areas indicated are inclusive of AC Ledge, Balcony and Strata Void where applicable. The Balcony shall not be enclosed. Only approved balcony screens are to be used. For an illustration of the approved balcony screen, please refer to the diagram annexed hereto as "Annexure".

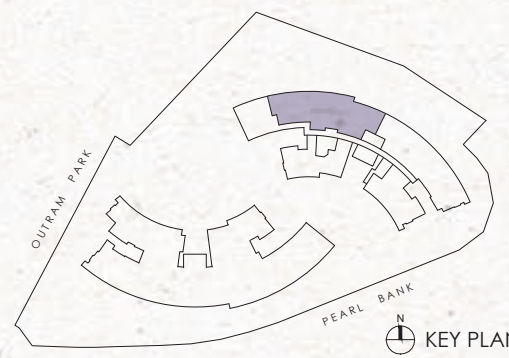
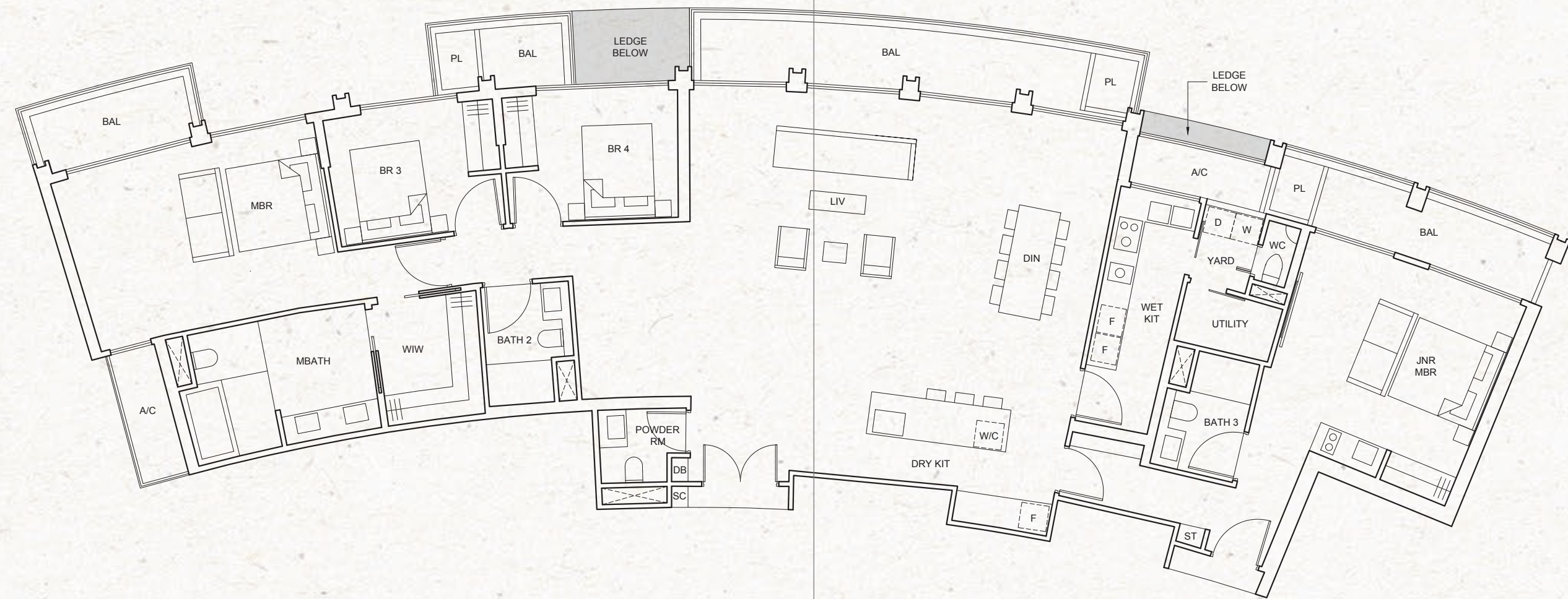


PENTHOUSE PLANS

PENTHOUSE

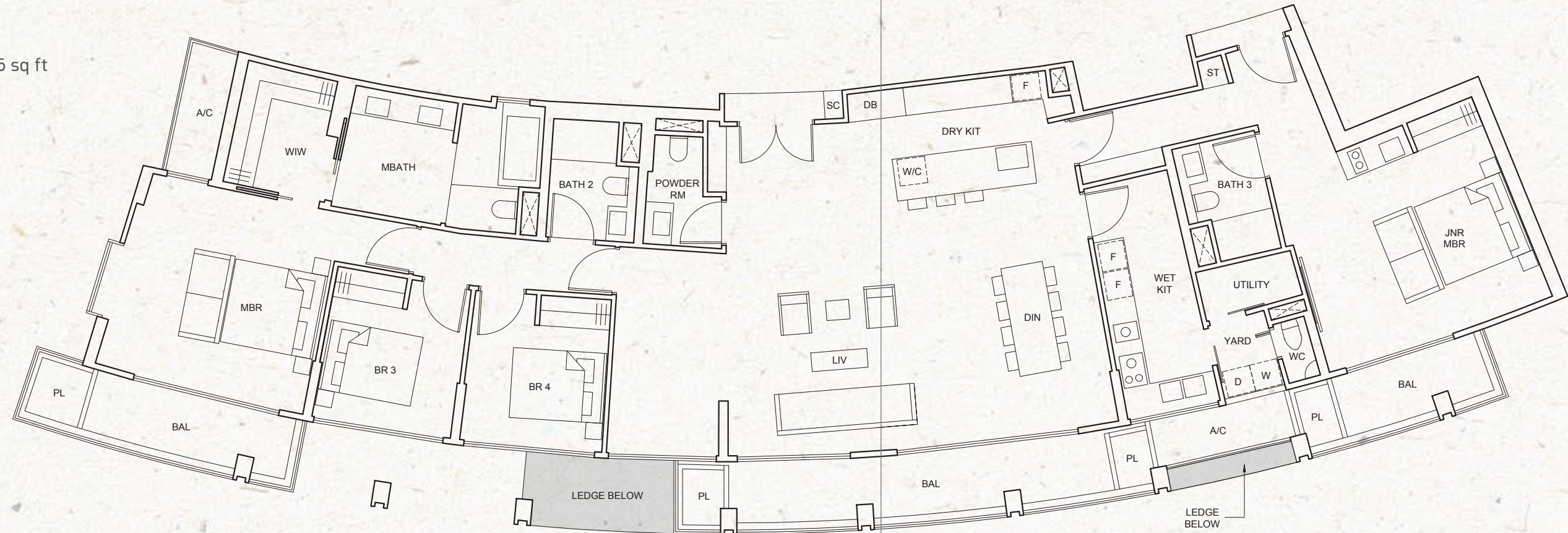
TYPE F1
250 sq m / 2,691 sq ft
#38-18

TYPE F2
259 sq m / 2,788 sq ft
#38-13

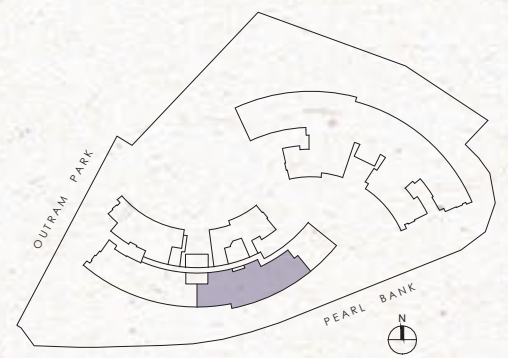


All floor areas indicated are inclusive of AC Ledge, Balcony and Strata Void where applicable. The Balcony shall not be enclosed. Only approved balcony screens are to be used. For an illustration of the approved balcony screen, please refer to the diagram annexed hereto as "Annexure".

TYPE F3
244 sq m / 2,626 sq ft
#38-06



TYPE F4
258 sq m / 2,777 sq ft
#38-02



All floor areas indicated are inclusive of AC Ledge, Balcony and Strata Void where applicable. The Balcony shall not be enclosed. Only approved balcony screens are to be used. For an illustration of the approved balcony screen, please refer to the diagram annexed hereto as "Annexure".

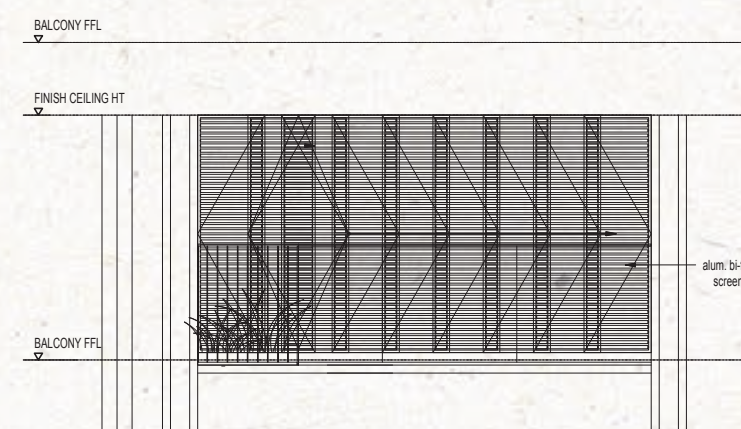


One
Pearl
Bank

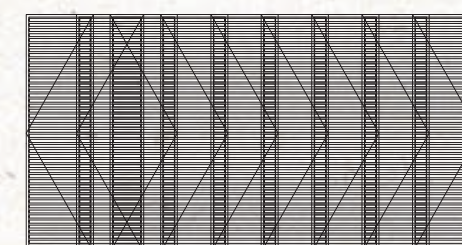
BALCONY SCREEN



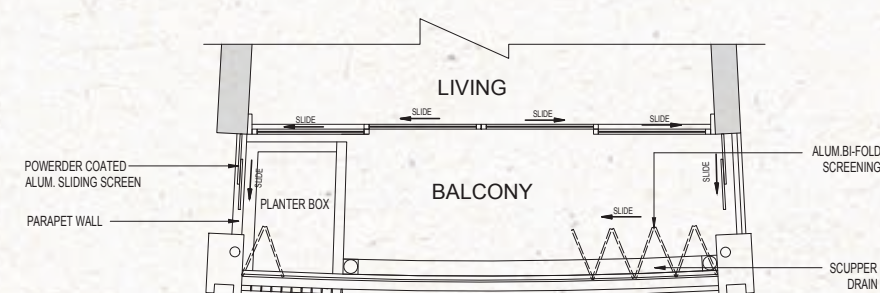
ANNEXURE



TYPICAL ELEVATION OF BALCONY WITH SCREEN

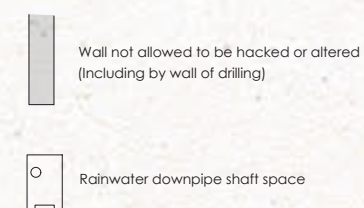


TYPICAL ELEVATION – BALCONY SCREEN



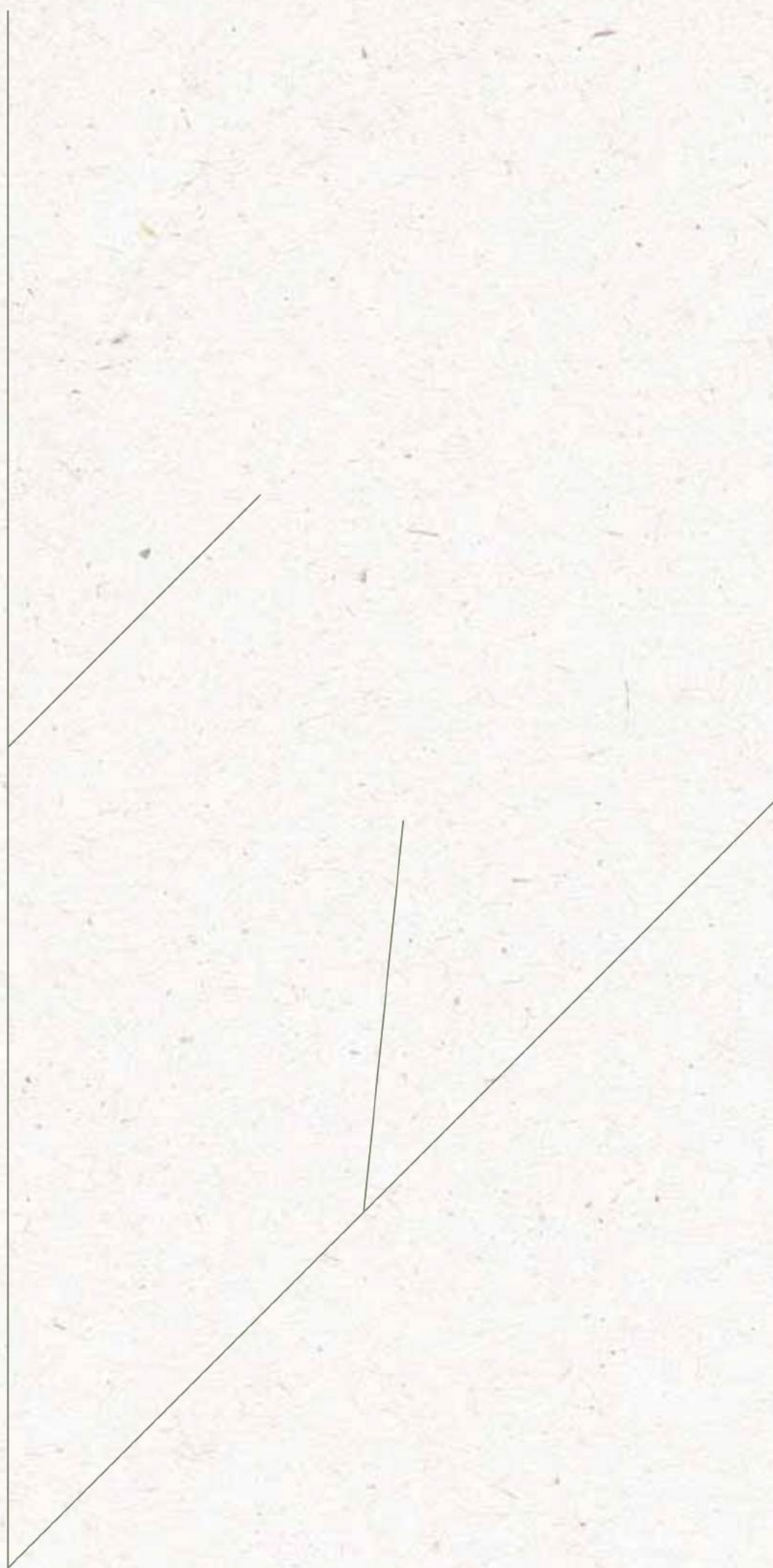
TYPICAL PLAN WITH BALCONY SCREEN

LEGEND :



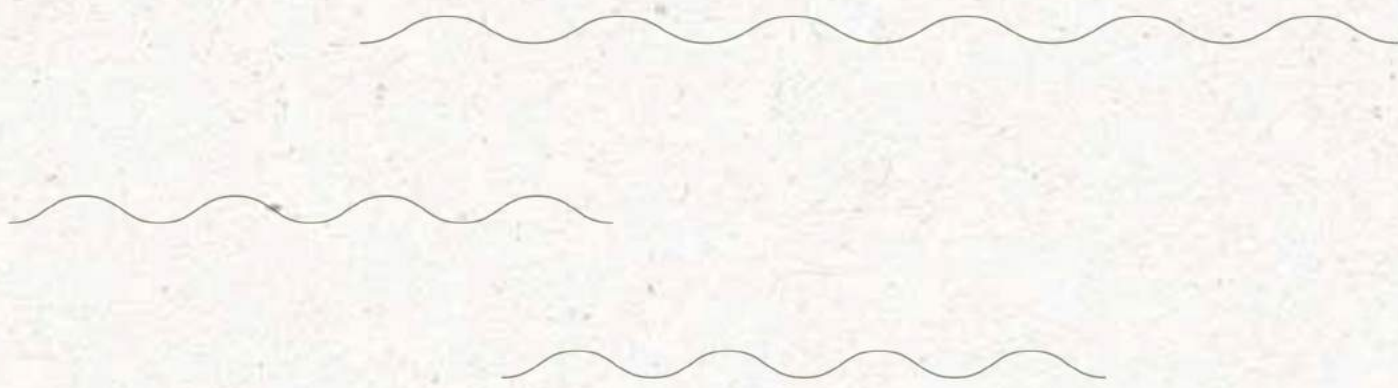
Note:

1. The balcony shall not be enclosed unless with the approved balcony screen
2. The proposed balcony screens allow for natural ventilation within the balcony at all times.
3. The installation and cost of the screen shall be borne by the Purchaser.
4. Please refer to the mock up of the approved balcony screen at the balcony.



For Enquiries
+65 6100 9851
Onepearlbanks.com

DEVELOPER: ARECA INVESTMENT PTE. LTD (199500924C) • DEVELOPER'S LICENCE NO.: C1313 • LOCATION: LOT(S) 00189L, TS 22, AT PEARL BANK / OUTRAM ROAD • TENURE: 99 YEARS WEF 1 MARCH 2019 • EXPECTED DATE OF VACANT POSSESSION: 31 DECEMBER 2023 • EXPECTED DATE OF LEGAL COMPLETION: 31 DECEMBER 2026



CapitaLand is one of Asia's largest real estate companies. Headquartered and listed in Singapore, it is an owner and manager of a global portfolio worth over S\$103 billion as at 31 March 2019, comprising integrated developments, shopping malls, lodging, offices, homes, real estate investment trusts (REITs) and funds. CapitaLand's market capitalisation is approximately S\$15 billion as at 31 March 2019. Present across more than 180 cities in over 30 countries, the Group focuses on Singapore and China as core markets, while it continues to expand in markets such as Vietnam, Europe and the USA.

CapitaLand's competitive advantage is its significant asset base and extensive market network. Coupled with extensive design, development and operational capabilities, the Group develops and manages high-quality real estate products and services. It also has one of the largest investment management businesses in Asia and a stable of five REITs listed in Singapore and Malaysia – CapitaLand Mall Trust, CapitaLand Commercial Trust, Ascott Residence Trust, CapitaLand Retail China Trust and CapitaLand Malaysia Mall Trust.
